



Hunting Texas

Advertising Supplement

www.lonestaroutdoornews.com

Annual 2007



INSIDE

- Ruger .375 cartridge – Page 4
- Nikon's Monarch scope – Page 12
- Sunrise/Sunsets – Page 16
- Cabela's outdoors mecca – Page 17
- SHE Safari's Kim Rhode – Page 6
- Capital Farm Credit – Page 14
- GMC trucks consistent – Page 16
- Farm Credit – Page 18
- Go with STIHL – Page 8
- Realtree camo – Page 15
- Hunting Seasons – Page 17
- Deer, dove, teal forecasts – Page 18



LIKE NO OTHER RETAIL STORE ON EARTH!™

With more than 200,000 outdoor products in our store, you're sure to find exactly what you need to turn your next hunting trip into a success. You'll find only the best in quality products to make your time outdoors more productive.



817.337.2400
MONDAY-SATURDAY 9AM-9PM
SUNDAY 9AM-7PM



512.295.1100
MONDAY-SATURDAY 9AM-9PM
SUNDAY 9AM-7PM

Cabela's

WORLD'S FOREMOST OUTFITTER®

Hunting • Fishing • Outdoor Gear



#14070

When you hear the call of the wild



We're the answer.



*Buy hunting land.
Enjoy nature.
Improve habitat.*

No matter what you want to do, we can finance it. And Capital Farm Credit also shares its earnings — we've returned more than \$100 million to our borrowers.

FINANCING FOR

Rural Land • Country Homes • Farms and Ranches • Livestock and Equipment • Operating Capital



Part of the Farm Credit System

capitalfarmcredit.com

877-944-5500



T E X A S ' L A R G E S T R U R A L L E N D E R

Ruger introduces .375 cartridge

Big game hunters planning an African safari might want to add one of the new Ruger M77 Hawkeye rifles and plenty of the .375 Ruger cartridges to their list of essential gear.

Sturm, Ruger & Company, Inc.'s new .375 Ruger cartridge was co-developed with Hornady Manufacturing, the world's largest independent manufacturer of bullets.

This powerhouse is described by the Nebraska ammo manufacturer as a practical, hard-hitting cartridge created for large and dangerous game.

According to information from Hornady, although the ammo is slightly larger in diameter than the .30-06, it shares the same case overall length, which means it can be chambered in any standard length action.

Engineers designed the new cartridge with a beltless case and technologically advanced propellants: the .375 Ruger pushes a 270-grain spire point-recoil proof bullet in excess of

2800 fps and the 300-grain bullets leave the muzzle at 2700 fps.

The cartridge was introduced earlier this year in three models:

- **270-grain SP-RP.**

For longer shots up to 300 yards.

- **300-grain RN.**

An expanding bullet that transfers energy

quickly and creates a large wound cavity while delivering excellent penetration. It is designed for dangerous game that requires devastating energy to incapacitate it.

- **300-grain FMJ-RN.** A jacketed bullet that penetrates the toughest hides. It's also for follow-up shots.

"We are extremely excited

about this new co-development between Ruger and Hornady," said Stephen L. Sanetti, president of Connecticut-based Sturm, Ruger, which is the nation's leading manufacturer of high-quality

action rifles provide shooters with such features as enhanced ergonomics, improved checkering of the walnut stock and the new LC6 trigger for a smooth,

crisp trigger pull. An all-new red rubber recoil pad is designed to absorb the recoil plus the rifle's steel floor plate latch allows for easy unloading without having to chamber each cartridge.

The M77 Hawkeye African model comes in a matte blue finish. It is 43 and 3/4 inches long, with its barrel length measuring 23 inches. The Alaskan model measures 40 and 3/4 inches overall, with a 20-inch barrel. It features an Alaskan black finish.

Both models have a suggested retail price of \$995. Other Hawkeye rifles cost about \$750.

For more information on the Ruger M77 Hawkeye rifles or for dealers, visit www.ruger.com. To learn more about the .375 Ruger cartridge, visit www.hornady.com.



Ruger M77 Hawkeye

firearms for recreation and law enforcement.

"The .375 Ruger cartridge has already been tested in Africa by both Ruger and Hornady staff with excellent results," Sanetti announced. "The shorter-barreled Alaskan rifle is the perfect gun where quick handling and hard-hitting cartridges are needed, while the African rifle will provide the same performance in a classic hunter's rifle."

The Ruger M77 Hawkeye bolt-

No Matter Your Hunt...

GMC 2500

GMC Denali

SNELL
BUICK•PONTIAC•GMC
Serving Dallas Since 1973

13615 N. Central Expy. • Dallas
214-363-7251
snellbuickpontiacgmc.com

Exit Midpark Road off Central Expressway

"The Best Deer Blind Ever Made"

TEXAS HUNTER
Exclusive Hide-A-Way Window System
Solid and clear window panels slide silently in the 4" wide double-track system and are easily re-positioned in any configuration... maximizing your visibility while remaining fully hidden from the field of view.

NEW!

View Inside 4' x 8' Double Blind

ALL BLINDS FEATURE

- Your choice of 18" Ground Legs, or a 5', 10', or 15' Powder Coated Steel Tower
- Hide-A-Way Window System with Unobstructed 360° View
- Tall and Roomy (8' 3" Headroom)
- Silent Sliding Windows and Door
- Starboard XL Marine Siding - Maintenance Free, No Painting - Lifetime Limited Warranty

10 FT. TOWER BLIND

- No. 1 Selling 4' x 4' Blind
- Unobstructed 360° View, Eye Level 14"
- One Piece Galvanized Roof
- Powder Coated Steel Tower
- The Ultimate in All Weather Comfort
- Optional Shooter's Chair & Rubber Mat

TDB-10 \$979
NOW.....\$899


Large 4' x 8' Double Blinds Also Available

We Ship Anywhere in Continental US!
Our blinds are designed to ship flat for easy and economical transport to your location.

NEW 2008 CATALOG
Call or Request your free copy online today!

1-800-969-3337
TEXAS HUNTER PRODUCTS
4242 IH-10 East, San Antonio, TX 78219
www.TexasHunterProducts.com



 The **NEW** Ruger® M77® Hawkeye®
30-06 Caliber | Centerfire Rifle

On any given Sunday, some guys focus on point spreads.
For you, it's all about the *points on the rack.*



A day of watching hulking gladiators chase the pigskin? Or a day perched on a deer stand with your trusty Ruger® M77® Hawkeye® at your side? No contest – if there's even a shred of outdoorsman in your DNA. And if you're fortunate enough to spot a trophy buck, the new M77 Hawkeye will be ready. While it shares a numerical moniker with our classic bolt-action M77 Mark II rifles, this is a newly re-engineered masterpiece. Highlights include a matte blued action and barrel, a slim, low-profile American walnut stock featuring wrap-around cut checkering, our new light, crisp LC6™ trigger and a Ruger Red Eagle recoil pad that soaks up recoil with gusto. In fact, if the new M77 Hawkeye isn't the most compelling reason to upgrade to a larger meat freezer, we don't know what is. For more information on the most anticipated bolt-action deer rifle in America, visit www.ruger.com/hawkeye/

© 2006 American Rifleman & Co., Inc. | Springfield, CT | Made in U.S.A.

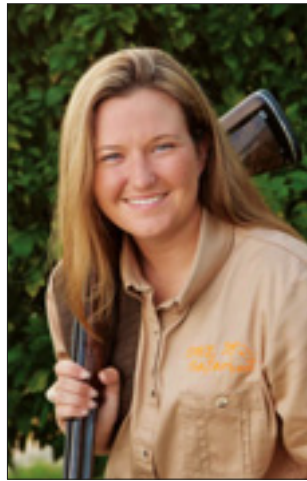
WWW.RUGER.COM
RUGER
ARMS MAKERS FOR RESPONSIBLE CITIZENS®

SHE Safari signs Kim Rhode as a national spokesperson

SHE Safari, maker of women's outdoor apparel, is proud to announce three-time Olympic medalist Kim Rhode as their newest national spokesperson. In addition, SHE Safari will create a new line of Kim Rhode shooting apparel.

"We are pleased and honored to have Kim on our team," said SHE Safari owners Pam and Brian Zaitz. "Kim will be an excellent representative and a wealth of knowledge for our company and the new line of clothing designed specifically for women shooters. We have a lot of confidence Kim's input and guidance, along with our designs, will ultimately be the finest in women's technical shooting apparel."

According to Kim, "I'm excited to be working with a company that is so dedicated to women in the outdoors. I'm proud to be associated with SHE Safari because they provide the avid outdoorswoman with high quality



Kim Rhode

apparel that is both functional and stylish. I'm looking forward to working together with SHE Safari to make this line really special."

By capturing a gold medal at yet another Olympiad, Athens in

2004, California's "Golden Girl" Kim Rhode has become the most decorated female Olympian in the history of USA Shooting. In 1996 she won the gold medal at the Centennial Olympic Games in Atlanta and in 2000 she won the bronze medal at the Sydney Olympic Games. In addition, Kim has won seven gold medals in World Cup competitions. Kim also captured the gold medal in her event at both the 1999 and 2003 Pan American Games.

Following her dramatic performance in Athens, Kim faced one of the greatest challenges of her career when her event, International Doubles Trap, was dropped from the Olympic Games. To continue to represent the U.S. in Olympic competition, Kim was forced to choose between trap and skeet shooting, and she would be facing competitors who had a tremendous head start on her for the 2008 Beijing Olympic Games. She opted for skeet shooting

because of the proximity of a shooting range for skeet.

Following months of hard work, Kim qualified for the U.S. National Shooting Team. In her first major World Cup event in Santo Domingo on March 22nd, Kim not only posted the highest score to win the gold medal, she also broke the world record in the process. She made a powerful statement that she is back ready to contend for another medal in 2008.

SHE Safari is a Texas-based company designing and producing the finest women's outdoor clothing in safari, upland, field and camouflage collections. The styles are developed with great attention to detail to provide attractive, fashionable and functional garments. SHE Safari offers a diverse line of clothing for her expedition, whether it be shooting, hunting or observing. For more information log on to: www.shesafari.com.

BURNHAM BROTHERS SINCE 1952
WITH THE RECENT GROWTH IN PREDATOR CALLING, THERE ARE SUDDENLY A LOT OF FOLKS SELLING CALLS. FOR RESULTS CONTACT THE ORIGINATORS NOT THE IMITATORS. WWW.BURNHAMBROTHERS.COM

Catastrophic

MOSSY OAK predator

20 Exciting Daytime Bobcat Hunts with Gary Roberson!

BURNHAM BROTHERS • P. O. BOX 427 • MENARD, TX 76859
(325)396-4572

QUAHADI WILDLIFE & RANCH RETREAT



50,000 private acres

Located on the
L.S. McDowell Family Ranches
In Glasscock, Borden & Howard Counties, TX

Whitetail*Quail*Turkey*Dove*Hogs

*Lodging *Leases & Guided Hunts *Retreats & Conferences *Camping & RV hookups*

Telephone: (432) 398-5461
www.quahadi-mcdowell.com
hunt@quahadi-mcdowell.com



QUAHADI WILDLIFE & Ranch Retreat

SHE Safari

clothing for HER expedition



www.SHEsafari.com

936-756-7169

Visit our website for a dealer near you.

Why choose a servicing STIHL dealer? It's the only way to go with STIHL

You're probably aware of the STIHL brand; in fact, you may have already used STIHL to tackle an outdoor project. And, when you think of STIHL, you probably think of long-lasting, high-quality craftsmanship and reliable sales and service. What you don't think of is the Big Box down the road.

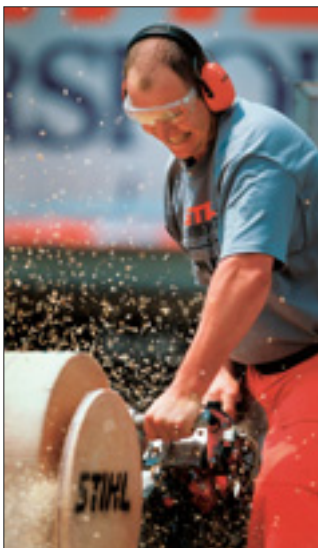
That's because STIHL products are sold only through a network of more than 8,000 servicing dealers throughout the United States. These dealers provide advice and product demonstrations as well as on-site service, and they carefully guide customers to the right product for the job.

Customer service and education is a cornerstone of every servicing STIHL dealer. They offer every product fully assembled and take the time to go over it with you. When you purchase a STIHL product, the dealer will explain every product detail to you and demonstrate proper use and care. Before you walk out the door with your new STIHL tool, you will be fully trained and confident.

In addition, STIHL dealers are committed to being outdoor power equipment specialists and receive ongoing training and support to ensure they can always service what they sell. They also provide their customers with operating and safety demonstrations as well as protective apparel.

From the woods of Maine, to hurricane recovery efforts in Louisiana and Mississippi to the farms of the Midwest and the icy cold of Alaska, when Americans have a tough job to do outdoors, they rely on a STIHL. It's an attitude, a dedication to quality that has made STIHL power tools the most dependable on the market and one of the reasons STIHL products have earned quality awards throughout the years.

Early on, STIHL made a commitment to ensuring they offered only the



TOP TOOL: Dedication to quality has made STIHL power tools the most dependable on the market.

best products and service. Local servicing STIHL dealers maintain a stocked parts department and product and application professionals assist customers in keeping their STIHL products in top shape. And if a STIHL requires professional attention, STIHL service departments are staffed with trained technicians who guarantee their work.

More importantly, each servicing STIHL dealer is there to support their customer. You can speak to the owner and get the answer you're looking for or the help you need without having to chase down assistance, submit endless forms or wait for hours on hold. In fact, the odds are good that you'll be remembered by name the next time you visit their location.

Finally, STIHL prides itself on a commitment to the global environment and the local communities they serve. Globally and across the country, STIHL continues to partner with agencies and organizations that encourage the responsible use of natural resources, promote sustainable growth woodlands and support the continuing education of our future farmers and agribusiness professionals.

Locally, servicing STIHL dealers lead by example in their communities. They are sensitive to the environment you share and committed to its improvement. When you have a tough outdoor chore to complete,

you're going to get advice from someone who understands the task because they're your neighbor and understand the challenges you face.

The only way to get quality STIHL products is to visit your local servicing STIHL dealer. You can find your nearest servicing STIHL dealer by visiting their Web site (www.stihlusa.com) and selecting the dealer locator or by calling 1-800-GO-STIHL.

Bring on the Season

STIHL®

HT 101 Telescoping Pole Pruner

\$599⁹⁹
16" bar

Shaft adjusts from 7' 6" to 11' 6", allowing the user to reach branches up to 16' above ground.



KM 55 R KombiMotor

One powerhead.
Multiple attachments.

\$189⁹⁹

Powerhead Only

UPGRADE TO: **STIHL Easy 2 Start™** NOW JUST **\$209⁹⁵**

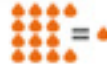
- Change the easy-to-switch attachments with a turn of the knob
- Easily converts to other useful tools with these optional attachments (sold separately):
Edge, Hedge Trimmer, Pole Pruner, Cultivator, Trimmer, STIHL PowerSweep™



SH 55 Shredder Vac

\$179⁹⁹

- For vacuuming and shredding yard debris around the home
- Reduces yard waste (14:1 ratio for dry leaves)



MS 180 C-BE STIHL MiniBoss™

\$249⁹⁹

- One of our most popular homeowner saws
- STIHL Easy2Start™ system makes starting almost effortless
- Exclusive toolless Quick Chain Adjuster for fast, easy chain adjustment



STIHL Easy 2 Start™

MS 290 STIHL Farm Boss®

\$349⁹⁹

- Our most popular model – the name says it all!
- Side access chain tensioner and IntelliCarb™ compensating carburetor



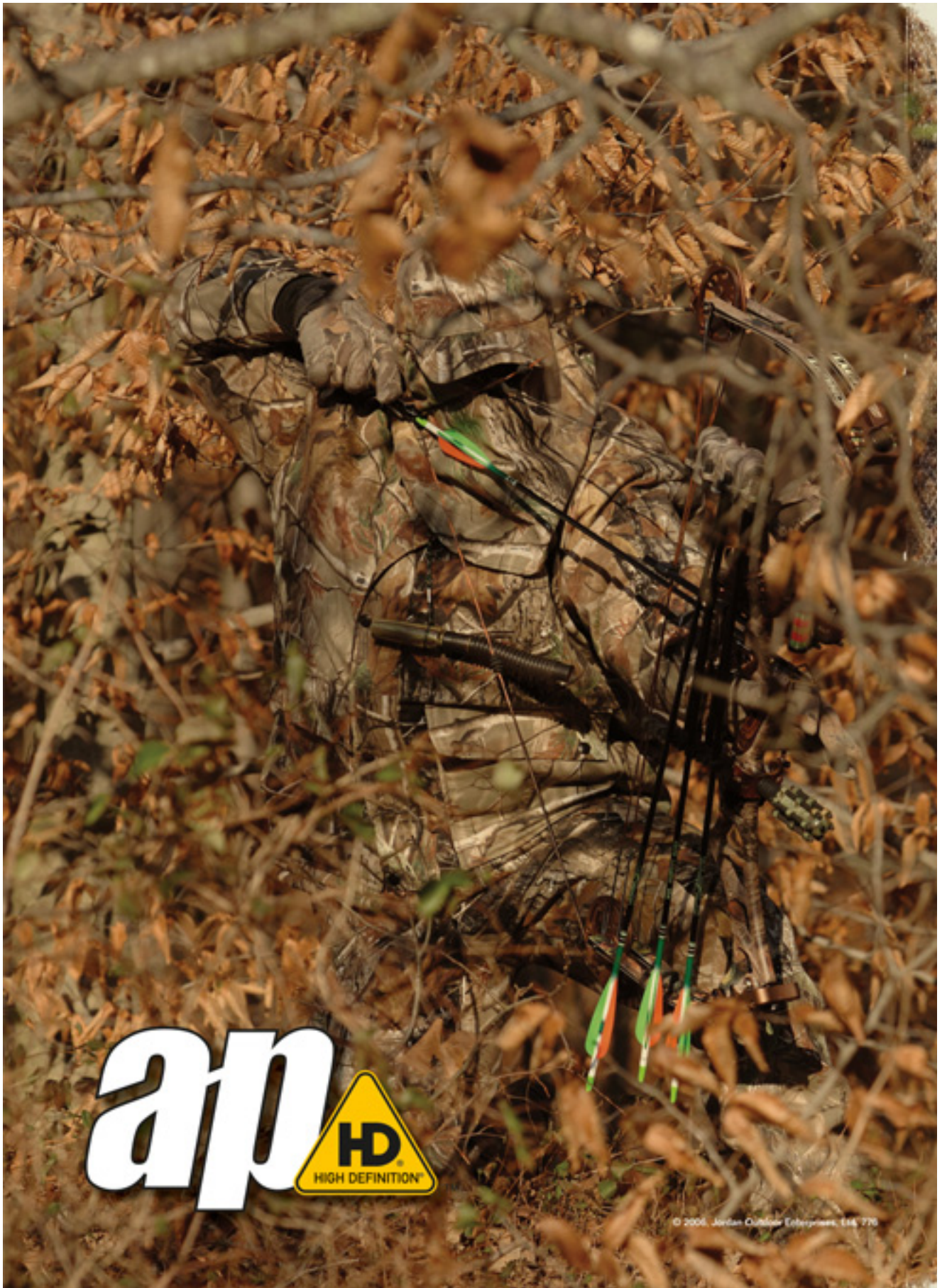
Please wear protective apparel as recommended in your instruction manual.



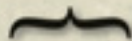
To find your local servicing dealer visit stihlusa.com

or call **1-800-GO-STIHL.**

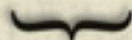
Are you ready for a **STIHL**?



Lighten UP.



One thing's for sure. When you wear new **REALTREE® ap**, you'll be confident. It's neutral, open, contrasty and realistic – all the things necessary to make a camo pattern versatile and effective. Perfecting our already advanced High Definition® printing process, **ap** offers hunters a lighter, more open, neutral-toned alternative with around-the-clock concealment, a universal color palette and unmatched depth and detail. New Realtree **ap** – It means "All-Purpose." We're certain you'll agree that it lives up to its name.



Bill Jordan

REALTREE®

Family, Friends and the Outdoors.®

FOR MORE INFO ABOUT BILL JORDAN'S REALTREE AP VISIT US @ WWW.REALTREE.COM

Monarch aims in on top performance

In 1917, Nikon began producing its first ultra-small prism binoculars. They must have been a boon for early outdoorsmen.

Since it introduced its first optical product, the Japanese manufacturer (originally known as Nippon Kogaku K.K.) has steadily grown its product line and upheld its well-regarded reputation for producing quality optics.

Today, aided by computer design, Nikon engineers optics that achieve the ideal balance of maximized light transmission, razor-sharp, high-resolution images and durable products designed to maximize performance in the field.

Among Nikon Sport Optics' comprehensive line of products for the outdoorsman are riflescopes, spotting scopes, rangefinders and, of course, binoculars.

One of its newest got-to-have-it products for hunters is the Monarch flagship rifle scope line.

Nikon designed the Monarch line around a new optical system created to give shooters increased versatility and superlative performance with virtually any type of rifle, in any caliber and in any imaginable hunting situation.

While still maintaining the preferred one-inch diameter main body tube, Nikon engineers developed the new Monarch series to not only provide the shooter with a big, bright, sharp sight picture, but also to minimize the overall length of the rifle scope while maximizing the mount ring spacing capability.

The resulting line of riflescopes pushes the envelope of optical performance with Nikon's lead-and-arsenic-free lenses and anti-reflective multicoatings.

Hunters will appreciate Monarch's eye box, which boasts 4-time zoom range, a comfortable four inches of eye relief plus a quick-focus eyepiece. The massive ocular lens also delivers both a large high-resolution sight picture and the maximum field of view corresponding to

each power setting.

The new rifle scope models utilize Nikon's hand-turn reticle adjustments and feature the company's new Interchangeable Turret Technology system, which allows shooters to switch out turret knobs and caps for maximum convenience and versatility.

Plus, the new Monarch riflescopes will offer one of the company's most recent innovations: its patented Bullet Drop Compensating (BDC) reticle. The BDC reticle offers shooters and hunters a revolution in accuracy and ease of use for long-range shooting. By incorporating small aiming circles into the reticle, the BDC allows shooters precise but unobtrusive aiming points. Each circle of the reticle allows three separate aiming points — top, bottom or middle of the circle.

The BDC's see-through ballistic circles offer an incredible advantage for long-range shooting, yet allow a normal sight picture for shorter-range shots where the crosshair itself is the aiming point.

Rifle scope consumers will also have the option of choosing Nikon's other reticle styles, including the Nikoplex, Mildot, Fine Crosshair and Fine Crosshair with Dot. Suggested retail pricing for the new Monarch riflescopes (matte finish with BDC reticle) are: \$409.95 for the 2.5-10x42; \$479.95 for the 2.5-10x50; \$429.95 for the 3-12x42SF; \$449.95 for the 4-16x42SF; \$529.95 for the 5-20x44SF; and \$649.95 for the 6-24x50SF.

For more information on Nikon's new Monarch Riflescopes, visit www.TheNewMonarch.com or www.nikon-sportoptics.com. For local retailers, call (800) 645-6678.



6-24x50SF Monarch

8429 6-24x50SF Matte BDC Reticle

Features

- Monarch Eye Box technology with four inches' of constant eye relief
- Wide, four-time zoom magnification range
- Bright, high-resolution optics
- Locking Side Focus Adjustment
- Three styles of hand-turn 1/8-MOA windage and elevation adjustments
- Enhanced ring spacing
- Sunshade included

The latest poop on Spin-Cast Wildlife Feeders of Texas - Now "RUGGEDIZED" more than ever...

MK-1/MK-2 Control Unit has 6 feeding times available. The rate of feed is fully adjustable for each feeding. (also available in 12 volt)

MK-6/MK-6Solar Control Unit will feed up to 4 times a day for 3, 6 or 9 seconds.

6V/12V LCD Digital Timer has the same features as the MK-1 and MK-2 Control Units.

Spin-Cast Wildlife Feeders of Texas
 2946 NE Loop 410
 San Antonio TX 78218
 Phone: 210-653-7514 (Info)
 210-653-3641 (Fax)
 1-800-950-7087 or 8087
 (Toll free for orders)
spincast@spincastfeeders.com
www.spincastfeeders.com
 Free Catalog Available

 All Control Units are shipped ready to use with fresh batteries, small cone and mounting hardware. Solar panel with stainless steel cooncable is included with Control Units that have rechargeable batteries. Plastic is made of **Virgin Polycarbonate with UV Inhibitors** (same tough, flexible material that is used in safety glass)

CHECK WEB SITE FOR LIMITED TIME OFFERS

Old Style MK-1/MK-2 Control Unit has 6 feeding times, with a fully adjustable feed rate. (also available in 12 volt)

All product descriptions and prices are subject to change without notice

HOW "GETTIN' CLOSE" GETS IT DONE.



MONARCH ATBs



Lee and Tiffany Lakosky consistently tag some of the finest trophies on television using gear that inspires confidence in their hunt. In binoculars, Nikon's exceptional Monarch ATB flat-out delivers in any weather or light conditions. It's no wonder the Monarch ATB has become the top binocular choice of the world's most successful hunters.

- 8x36
- 10x36
- 8x42
- 10x42
- 12x42
- 8.5x56
- 10x56
- 12x56



NIKONSPORTOPTICS.COM



The trusted name in optics.

Recreation No.1 reason for buying rural land

State's largest rural lender witnesses trend first-hand

A growing number of people are heading to the country to buy land, and most of them are looking for a place where they can enjoy their favorite pas-time. Hunting accounts for a large share of recreational land buyers, but other diverse interests ranging from fishing and weekend ranching to wildlife photography and hiking are also on the list.

This news comes as no surprise to the lending specialists at Capital Farm Credit, the state's largest rural lender. They have witnessed the trend first-hand.

"We've seen a huge increase in the number of people buying land for recreation, so much so that it has become the primary driving factor for land values in many areas," said Ben Novosad, Capital Farm Credit's chief executive officer.



Live in the City, Own Land in the Country

Jay Stewart, president of Capital Farm Credit's Mason office, which makes loans in the Texas Hill Country, has seen recreation and long-term investment potential become two of the top reasons people give for wanting to buy property.

"Many new land buyers view real estate as a tangible investment asset with a reasonable expectation of return that their family can enjoy while it appreciates," Stewart said. "It's kind of hard to enjoy a stock certificate or mutual funds, but with land you can get out and do the things you enjoy."

The lending cooperative also reports an upswing in the number of city-dwellers owning land in the country.

"Some of our customers are planning to leave the city behind and move to the country full time," Novosad said. "But an equal number just want a place to go on the weekends. We can help both."

Specialist in Rural Financing

Capital Farm Credit specializes in rural financing, including loans for rural land, country homes, agriculture and agribusiness. The lender also can provide operating capital or loans for equipment and land improvements.

"If it's in the country, we can finance it," Novosad said. "We've been making rural loans for 90 years, so we have a depth of experience that most other lenders can't offer."

Stewart agreed that knowledge of the local area and expertise in rural lending can be a huge help to people looking to buy rural land. "When people come in who have a piece of property they're interested in, most of the time we are familiar with the property or at least with the area and can tell them something about it," Stewart said.

Customers Share in Earnings

"Another big advantage is that because we are a cooperative, our customers share in our earnings," Novosad said. "We've returned more than \$100 million to our customers through our patronage program over the last decade."

That pays off for Capital Farm Credit customers, said Don Liska, who ranches near Beeville.

"Capital is the only financial institution I know of that pays you to do business with them," Liska said. He financed his first piece of property with Capital Farm Credit in 1994 and went there again two years ago when he was ready to buy more land.

"My experience with my local Capital office has been excellent. I've known them for a long while, and they're good people," Liska said. "I already enjoy doing business there. The patronage payment is a bonus."

For more information about Capital Farm Credit, visit www.capitalfarm-credit.com.

See the Power
Feel the Power
Hear the ZILCH!!!

XOFA
SPONSOR

All Electric 4 Wheel Drive

HuntVe 4x4

"Best in Class"

- Vigorous 4 Wheel Braking
- Auto-Locking Differential
- Unmatched Handling and Turning Radius
- High Performance 4S Volt Drive System
- Comfort Ride System with Independent Front Suspension

"The Toughest All Electric 4x4 on the Market"

Jay Novacek

Exclusive Supplier of the HuntVe

KING BROS. UTV RANCH

Since 1974
The Best Utility Vehicle Store In The Country

1.800.285.3649 rob@KingBrosUTVRanch.com
www.KingBrosUTVRanch.com
or
www.HuntVe.com

Realtree camo drawing attention

Since the launch of the Realtree AP and Realtree APG camo at the 2007 Shot Show in February, the "All-Purpose" pattern has captured the attention of manufacturers in the outdoor industry.

Hunters will find the new camo gracing clothing, accessories, guns and other gear at their favorite retailers by fall or sooner.

According to Realtree: "Twenty years of countless field tests and meticulous design and printing improvements have led to one simple truth: Mother Nature does it best, but Realtree AP and Realtree APG aren't far behind."

The visually-striking pattern, designed by Realtree president/owner Bill Jordan and Team Realtree, takes advantage of a high-definition imaging process to offer a lighter, more open, neutral-toned alternative. With its universal color palette, unmatched depth and detail, and superb contrast, the pattern sets a new standard in camouflage effectiveness.

The AP is suited for autumn, winter and early spring, while APG (All-Purpose Green) is designed for early autumn and spring — although, depending on the terrain and time of year, the patterns can be mixed for ultimate effectiveness.

Realtree pro-staffer Sam Klement, who also is the owner of Spectrum Outdoor Hunting Videos (www.spectrumoutdoors.com), has had great success with both Realtree AP and Realtree APG.

"To me there is no pattern on the market that even comes close!" Klement said.

He has hunted with the new camo in Kansas, Alabama, Georgia and Texas (around the San Angelo area).

In the past two years, Klement says, he's shot eight turkeys with his bow and arrow using no commercial hunting blind.

"I relied strictly on my Realtree AP/APG. The distance was anywhere from five to 10 yards. If you have ever hunted turkeys, you are aware of how keen their eyesight is. I am convinced my Realtree gave me the edge on all these hunts," said Klement, who captured some of his hunts on several new DVDs, including Realtree's "Nocked and Loaded" and Hunter's Specialties' "Cuttin' N' Struttin'."

Because the industry is betting that other hunters will find the new camo just as effective, it is receiving wide acceptance.

According to Realtree Public Relations Manager Dodd Clifton: "Consumers should be able to walk into any store this fall and find products with this camo."

A small sampling includes the following:

Wear it ...

Wrangler ProGear's features the new camo on its new 2007 hunting line, including the five- and nine-pocket jeans, the upland jean, shooter shirt, long- and short-sleeve tee shirts, flannel field shirt and the Pro-Stalker hooded jacket. Jerry Guiliano, merchandise manager for Wrangler Specialty Apparel, says: "Realtree AP has been a great addition to our existing Hardwoods Grey and Max-1 patterns and hunters are excited about this new camo for the fall hunting season. All early reports show the line performing very well with goods flying off the shelves.

"But the proof will be in the hunting! If they



are successful, and I believe they will be, hunters are really going to appreciate the colors, depth, detail and contrast that will provide the additional coverage we are all looking for."

He adds that Wrangler ProGear, which enjoys a great reputation for technically superior gear and superb fits, is proud to be a flagship brand with this new pattern.

For retailers, visit www.wrangler.com.

... bear it...

The new camo can be found on Remington's Limited Edition XCR (Xtreme Conditions Rifle). The Model 700 rifle, which was issued in partnership with the Rocky Mountain Elk Foundation, is chambered for the .300 Remington Ultra Magnum cartridge. Built to handle the most extreme terrain

and weather conditions, the rifle features stainless-steel barreled action with TriNyte corrosion-control treatment. Its stock features an R3 recoil pad and incorporates easy-grip, overmolded rubber panels in the grip and fore-end areas. The 46 1/2-inch-long centerfire rifle sells for about \$1,330. For more information, visit www.remington.com.

... and wrap it!

Illinois-based Camoclad Inc. offers the AP and the APG camo patterns on its 4-foot by 5-foot vinyl sheets. The vinyl is scratch-resistant, fade-resistant and scuff-resistant. And, it can be repositioned.

It will cover trucks, boats, ATVs, anything with a smooth, hard surface. Al Mach, general manager of Camoclad, says: "The only limitation is your imagination."

She adds that the AP and APG pattern is becoming "very popular, very quickly."

"It is easily adaptable to any type of environment. I've sold it for duck boats in Florida and hunting trucks in Montana."

The vinyl sheets sell for \$75. For more information on the company's truck, boat or ATV kits or mini kits for such items as cell phones, visit www.camoclad.com. Or, call (800) 585-8550 for a free catalog.

Consistency is the key to GMC trucks

What Jay Novacek, the talented tight end for the Dallas Cowboys from 1990 to 1995, appreciates about the 3500 Sierra is its consistency.

"The main thing is its consistency on things such as mileage," said the 6-foot-4-inch former NFL player.

Novacek has used the powerful 2007 Sierra pickup for such work as pulling trailers on his property south of Fort Worth and on his 3,500-acre Nebraska ranch, a private hunting and cattle ranch where he also works with cutting horses.

He also has driven the Sierra when hunting in Texas and Nebraska.

"It does fine in all terrains," said the five-time pro-bowler.

Later this month, dealerships will start unveiling GMC's line of 2008 models. Among them will be the 2008 Sierra HD (the HD stands for Heavy Duty) pickups, which boast V-8 power coupled with fuel efficiency, an agile ride and handling, plus the quietest interior of any full-size truck.

The new models, with an MSRP ranging from \$24,575 to \$40,550, will be available in 2WD and 4WD, with several trim packages, and in three cab styles — regular, extended and crew cab. Also, three cargo box lengths — 5 feet 8 inches, 6 feet 6 inches and 8 feet — will be offered.

Among its features are:



• Distinctive design

A "center-focused" hood, which flows outward to meet the front fenders, and stamped-in rear wheel flares enhance the muscular look. Its grille is complemented by large, jeweled-appearance headlamps. Door handles feature large, grab-style designs that are easy to open with gloves.

• Spacious, refined interior

Sierra models offer increased storage space, as well as flush surfaces, tight gaps and tolerances, and improved comfort and convenience.

Standard on crew cab models and available on extended cab models is a new, stadium-style rear seat with a 60/40-split design. It can be easily folded up to provide an uninterrupted load floor.

Cloth seats are standard; leather seats are

optional on some models.

Also optional on most models are a touch-screen navigation radio, power-operated sunroof, power-sliding rear window and XM Satellite Radio.

• Responsive driving experience

A boxed frame, coil-over-shock front suspensions and rack-and-pinion steering offer increased stability. Five suspension systems are available, each tailored to suit specific driving requirements.

The trucks are powered by a line-up of efficient engines, led by the segment's highest-rated V-8 engines. Advanced technology, such

as Active Fuel Management and variable valve timing, helps Sierra deliver the segment's best fuel economy. A FlexFuel engine is available — and partnered with fuel-saving AFM — giving customers the choice of powering their truck with E85 ethanol, gasoline or a combination of both fuels.

• Safety and security

Augmenting Sierra's strong frame and body structure is industry-leading technology, such as its StabiliTrak electronic stability control with rollover mitigation technology, roof-mounted head curtain side air bags, and safety belt pretensioners that activate during a rear-end crash.

All models come standard with the OnStar Generation 7 system.

For more information, log onto www.gmc.com or visit your nearest GMC dealer.

Sunrise/Sunset September 2007 - February 2008												AccuWeather.com®					
September			October			November			December			January		February			
Date	Sunrise	Sunset	Date	Sunrise	Sunset	Date	Sunrise	Sunset	Date	Sunrise	Sunset	Date	Sunrise	Sunset	Date	Sunrise	Sunset
Sept. 1	7:02 am	7:54 pm	Oct. 1	7:22 am	7:13 pm	Nov. 1	7:46 am	6:37 pm	Dec. 1	7:12 am	5:21 pm	Jan. 1	7:31 am	5:32 pm	Feb. 1	7:24 am	6:00 pm
Sept. 2	7:03 am	7:53 pm	Oct. 2	7:23 am	7:12 pm	Nov. 2	7:46 am	6:36 pm	Dec. 2	7:13 am	5:21 pm	Jan. 2	7:31 am	5:33 pm	Feb. 2	7:23 am	6:01 pm
Sept. 3	7:04 am	7:51 pm	Oct. 3	7:23 am	7:11 pm	Nov. 3	7:47 am	6:36 pm	Dec. 3	7:14 am	5:21 pm	Jan. 3	7:31 am	5:34 pm	Feb. 3	7:22 am	6:02 pm
Sept. 4	7:04 am	7:50 pm	Oct. 4	7:24 am	7:09 pm	Nov. 4	6:48 am	6:35 pm	Dec. 4	7:15 am	5:21 pm	Jan. 4	7:31 am	5:34 pm	Feb. 4	7:22 am	6:03 pm
Sept. 5	7:05 am	7:48 pm	Oct. 5	7:25 am	7:08 pm	Nov. 5	6:49 am	6:34 pm	Dec. 5	7:16 am	5:21 pm	Jan. 5	7:31 am	5:35 pm	Feb. 5	7:21 am	6:04 pm
Sept. 6	7:06 am	7:47 pm	Oct. 6	7:25 am	7:07 pm	Nov. 6	6:50 am	6:33 pm	Dec. 6	7:16 am	5:21 pm	Jan. 6	7:32 am	5:36 pm	Feb. 6	7:20 am	6:05 pm
Sept. 7	7:06 am	7:46 pm	Oct. 7	7:26 am	7:06 pm	Nov. 7	6:51 am	6:32 pm	Dec. 7	7:17 am	5:21 pm	Jan. 7	7:32 am	5:37 pm	Feb. 7	7:19 am	6:06 pm
Sept. 8	7:07 am	7:44 pm	Oct. 8	7:27 am	7:04 pm	Nov. 8	6:52 am	6:32 pm	Dec. 8	7:18 am	5:22 pm	Jan. 8	7:32 am	5:38 pm	Feb. 8	7:19 am	6:06 pm
Sept. 9	7:08 am	7:43 pm	Oct. 9	7:27 am	7:03 pm	Nov. 9	6:53 am	6:31 pm	Dec. 9	7:19 am	5:22 pm	Jan. 9	7:32 am	5:39 pm	Feb. 9	7:18 am	6:07 pm
Sept. 10	7:08 am	7:42 pm	Oct. 10	7:28 am	7:02 pm	Nov. 10	6:54 am	6:30 pm	Dec. 10	7:20 am	5:22 pm	Jan. 10	7:32 am	5:39 pm	Feb. 10	7:17 am	6:08 pm
Sept. 11	7:09 am	7:40 pm	Oct. 11	7:29 am	7:00 pm	Nov. 11	6:54 am	6:29 pm	Dec. 11	7:20 am	5:22 pm	Jan. 11	7:32 am	5:40 pm	Feb. 11	7:16 am	6:09 pm
Sept. 12	7:09 am	7:39 pm	Oct. 12	7:30 am	6:59 pm	Nov. 12	6:55 am	6:29 pm	Dec. 12	7:21 am	5:22 pm	Jan. 12	7:32 am	5:41 pm	Feb. 12	7:15 am	6:10 pm
Sept. 13	7:10 am	7:38 pm	Oct. 13	7:30 am	6:58 pm	Nov. 13	6:56 am	6:28 pm	Dec. 13	7:22 am	5:22 pm	Jan. 13	7:31 am	5:42 pm	Feb. 13	7:14 am	6:11 pm
Sept. 14	7:11 am	7:36 pm	Oct. 14	7:31 am	6:57 pm	Nov. 14	6:57 am	6:27 pm	Dec. 14	7:22 am	5:23 pm	Jan. 14	7:31 am	5:43 pm	Feb. 14	7:13 am	6:12 pm
Sept. 15	7:11 am	7:35 pm	Oct. 15	7:32 am	6:56 pm	Nov. 15	6:58 am	6:27 pm	Dec. 15	7:23 am	5:23 pm	Jan. 15	7:31 am	5:44 pm	Feb. 15	7:12 am	6:13 pm
Sept. 16	7:12 am	7:34 pm	Oct. 16	7:33 am	6:54 pm	Nov. 16	6:59 am	6:26 pm	Dec. 16	7:24 am	5:23 pm	Jan. 16	7:31 am	5:45 pm	Feb. 16	7:11 am	6:14 pm
Sept. 17	7:13 am	7:33 pm	Oct. 17	7:33 am	6:53 pm	Nov. 17	7:00 am	6:26 pm	Dec. 17	7:24 am	5:24 pm	Jan. 17	7:31 am	5:46 pm	Feb. 17	7:10 am	6:15 pm
Sept. 18	7:13 am	7:31 pm	Oct. 18	7:34 am	6:52 pm	Nov. 18	7:01 am	6:25 pm	Dec. 18	7:25 am	5:24 pm	Jan. 18	7:30 am	5:47 pm	Feb. 18	7:09 am	6:15 pm
Sept. 19	7:14 am	7:30 pm	Oct. 19	7:35 am	6:51 pm	Nov. 19	7:02 am	6:25 pm	Dec. 19	7:25 am	5:25 pm	Jan. 19	7:30 am	5:48 pm	Feb. 19	7:08 am	6:16 pm
Sept. 20	7:15 am	7:28 pm	Oct. 20	7:36 am	6:50 pm	Nov. 20	7:03 am	6:24 pm	Dec. 20	7:26 am	5:25 pm	Jan. 20	7:30 am	5:49 pm	Feb. 20	7:07 am	6:17 pm
Sept. 21	7:15 am	7:27 pm	Oct. 21	7:37 am	6:49 pm	Nov. 21	7:03 am	6:24 pm	Dec. 21	7:27 am	5:25 pm	Jan. 21	7:29 am	5:49 pm	Feb. 21	7:06 am	6:18 pm
Sept. 22	7:16 am	7:25 pm	Oct. 22	7:37 am	6:47 pm	Nov. 22	7:04 am	6:24 pm	Dec. 22	7:27 am	5:26 pm	Jan. 22	7:29 am	5:50 pm	Feb. 22	7:05 am	6:19 pm
Sept. 23	7:17 am	7:24 pm	Oct. 23	7:38 am	6:46 pm	Nov. 23	7:05 am	6:23 pm	Dec. 23	7:28 am	5:27 pm	Jan. 23	7:29 am	5:51 pm	Feb. 23	7:04 am	6:20 pm
Sept. 24	7:17 am	7:23 pm	Oct. 24	7:39 am	6:45 pm	Nov. 24	7:06 am	6:23 pm	Dec. 24	7:28 am	5:27 pm	Jan. 24	7:28 am	5:52 pm	Feb. 24	7:03 am	6:21 pm
Sept. 25	7:18 am	7:21 pm	Oct. 25	7:40 am	6:44 pm	Nov. 25	7:06 am	6:23 pm	Dec. 25	7:28 am	5:28 pm	Jan. 25	7:28 am	5:53 pm	Feb. 25	7:02 am	6:21 pm
Sept. 26	7:19 am	7:20 pm	Oct. 26	7:41 am	6:43 pm	Nov. 26	7:07 am	6:23 pm	Dec. 26	7:29 am	5:28 pm	Jan. 26	7:27 am	5:54 pm	Feb. 26	7:00 am	6:22 pm
Sept. 27	7:19 am	7:19 pm	Oct. 27	7:41 am	6:42 pm	Nov. 27	7:08 am	6:22 pm	Dec. 27	7:29 am	5:29 pm	Jan. 27	7:27 am	5:55 pm	Feb. 27	6:59 am	6:23 pm
Sept. 28	7:20 am	7:17 pm	Oct. 28	7:42 am	6:41 pm	Nov. 28	7:09 am	6:22 pm	Dec. 28	7:30 am	5:29 pm	Jan. 28	7:26 am	5:56 pm	Feb. 28	6:58 am	6:24 pm
Sept. 29	7:21 am	7:16 pm	Oct. 29	7:43 am	6:40 pm	Nov. 29	7:10 am	6:22 pm	Dec. 29	7:30 am	5:30 pm	Jan. 29	7:26 am	5:57 pm	Feb. 29	6:57 am	6:25 pm
Sept. 30	7:21 am	7:15 pm	Oct. 30	7:44 am	6:39 pm	Nov. 30	7:11 am	6:22 pm	Dec. 30	7:30 am	5:31 pm	Jan. 30	7:25 am	5:58 pm			
			Oct. 31	7:45 am	6:38 pm	Nov. 30	7:11 am	6:22 pm	Dec. 31	7:31 am	5:32 pm	Jan. 31	7:24 am	5:59 pm			

Austin, Texas times shown. Determine the actual sunrise/sunset in your area at www.usno.navy.mil.

2007-2008 HUNTING SEASONS

ALLIGATOR

22 counties & special properties (by permit only) Sept. 10-30
Remainder of the state Apr. 1-June 30

PRONGHORN ANTELOPE

35 counties (by permit only) Sept. 29-Oct. 7

DOVE

North Zone: Sept. 1-Oct. 30

Daily Bag Limit: 15 mourning, white-winged, and white-tipped doves in the aggregate, to include not more than two whitetips.

Central Zone: Sept. 1-Oct. 30, Dec. 26-Jan. 4

Daily Bag Limit: 12 mourning, white-winged, and white-tipped doves in the aggregate, to include not more than two whitetips

South Zone: Sept. 21-Nov. 11, Dec. 26-Jan. 12

Daily Bag Limit: 12 mourning, white-winged and white-tipped doves in the aggregate, to include not more than two whitetips.

Special South Texas Zone: Sept. 1, 2, 8 & 9

Daily Bag Limit: 12 white-winged, mourning and white-tipped doves in the aggregate, to include not more than 4 mourning doves and 2 whitetips

Sept. 21-Nov. 11, Dec. 26-Jan. 8

Daily Bag Limit: 12 mourning, white-winged and white-tipped doves in the aggregate, to include not more than two whitetips.

Possession Limit (All Zones): twice the daily bag limit

EARLY TEAL-ONLY

High Plains Mallard Management Unit Sept. 15-23

Remainder of the state Sept. 15-30

Daily Bag Limit: 4 Possession Limit: 8

WHITE-TAILED DEER

Archery-Only Season: Sept. 29-Nov. 2

General Season:

- Special Youth Season: Oct. 27-28, Jan. 19-20

North Texas (200 counties) Nov. 3-Jan. 6

Panhandle (6 counties) Nov. 17-Dec. 2

South Texas (30 counties) Nov. 3-Jan. 20

Late Antlerless and Spike

Edwards Plateau (39 counties) Jan. 7-20

South Texas (30 counties) Jan. 21-Feb. 3

Muzzleloader (23 counties) Jan. 12-20

MULE DEER

Archery-Only Season: Sept. 29-Nov. 2

General Season:

Panhandle (36 counties) Nov. 17-Dec. 2

SW Panhandle (7 counties) Nov. 17-25

Trans-Pecos (19 counties) Nov. 24-Dec. 9

JAVELINA

(Approximately 43 counties) Oct. 1-Feb. 24

(Approximately 50 counties) Sept. 1-Aug. 31

PHEASANT

Chambers, Jefferson & Liberty counties Nov. 3-Feb. 24

Panhandle (37 counties) Dec. 1-30

Daily Bag Limit: 3 cocks, Possession Limit: 6 cocks

QUAIL

Statewide (all counties): Oct. 27-Feb. 24

Dail Bag Limit: 15 Possession Limit: 45

RIO GRANDE TURKEY

Archery-Only Season: Sept. 29-Nov. 2

Fall Season:

- Special Youth Season: Oct. 27-28, Jan. 19-20

North Zone (122 counties): Nov. 3-Jan. 6

South Zone (26 counties): Nov. 3-Jan. 20

Brooks, Kenedy, Kleberg, & Willacy counties Nov. 3-Feb. 24

Spring Season:

North Zone (101 counties): Mar. 29-May 11

- Special Youth Season: Mar. 22-23, May 17-18

South Zone (54 counties): Mar. 15-Apr. 27

- Special Youth Season: Mar. 8-9, May 3-4

1-Turkey Bag Limit (11 counties) Apr. 1-30

EASTERN TURKEY

Spring-Only Season

East Texas (43 counties) Apr. 1-30

Cabela's an outdoorsman's shopping mecca

Since Cabela's opened its 234,000-square-foot destination store in Fort Worth in May of 2005, several million customers have walked through the doors.

Located off I-35 and state highway 170, this outdoorsman's shopping mecca draws visitors from within the metroplex and beyond. About half of their visitors, says company spokesman David Draper, come from outside a 50-mile radius.

While customers may revel in the realistic wildlife dioramas and huge aquariums or enjoy the store's seminars and other educational fare, what keeps drawing them back is the merchandise.

The store, one of Cabela's largest, offers gear for hunters, anglers, campers, RVers and boaters. If men, women or youths need it for their outdoor pursuits, Cabela's, the world's foremost outfitter, probably stocks it.

Draper cites the great selection and quality of its gear coupled with the expertise of its staff as Cabela's main strengths.

"Our people are the

most knowledgeable in the industry," he said.

It is those strengths that have propelled the Sidney, Neb.-based company to its spot as the largest direct marketer, and a leading specialty retailer, of hunting, fishing, camping and related outdoor merchandise.

Cabela's was started in 1961 by Dick Cabela, who began selling fishing flies through direct mail out of his home in Chappell, Neb. He and his wife, Mary, added to their product line and a year later went into the business full time.

By 1969 (brother Jim Cabela joined the company in '63), Cabela's was operating out of a 50,000 square-foot facility in Sidney.

Currently, the company headquarters are housed in a massive state-of-the-art building completed in 2002.

What began strictly as a direct mail business has since expanded to include more than 76 catalogs per year (including specialty books focusing on such pursuits as archery, fly-fishing and boating) shipped throughout the U.S.



CABELA'S FORT WORTH STORE IS LOCATED OFF INTERSTATE 35 AND STATE HIGHWAY 170.

and into 120 countries. Cabela's has a strong presence on the Internet (www.cabelas.com), where customers can shop or go to find information. The company has strengthened its brand recognition through such endeavors as Cabela's Outfitter Journal magazine and television show.

In the late 1960s, the outdoor outfitter opened its first retail store in Sidney. Cabela's has since opened more stores, but it wasn't

until the company went public in 2004 that it accelerated its expansion on the retail end.

Today, Cabela's has 19 retail stores across the country, including two in Texas (its 192,000-square-foot store in Buda opened in June of 2005).

And, more are on the way across the U.S. and in Canada. Plans call for 12 new stores to open in the next two years.

"We're expanding aggressively in 2008," Draper

said.

As for the Fort Worth store, Draper said, "It's been a very good store for us. It's doing as well as we thought it would."

"Definitely, Texas is one of our big states because of the number of hunters," Draper said. "The stores are a good fit for the Texas market."

So, is Cabela's expanding into any more Texas cities? "The possibility of more Texas stores in the future is there," Draper said.

Recreation big business for Texas landowners

For many rural landowners, outdoor recreation has become a lucrative business opportunity. An increasing number of Texas ranchers have opened their gates to welcome hunters, birdwatchers and hikers — and the money they bring with them.

The money spent on recreation is substantial. In Texas, 1.2 million people hunted, and together they contributed \$1.8 billion to retail sales, according to the International Association of Fish and Wildlife Agencies. In some cases, recreation has become a primary source of income for landowners, instead of a secondary one. That is good news not only for landowners but also for local rural economies.

Farm Credit Finances Recreation-Based Businesses

Farm Credit, the nation's oldest and largest rural lending network, is helping farmers, ranchers and other landowners develop recreation-based businesses.

Local Farm Credit financing institutions have existed for 90 years, since shortly after Congress established the Farm Credit System in 1916. For all these years, they have been providing a reliable source of credit to farmers and ranchers, and now this includes making loans for a new breed of diverse businesses.

"Farm Credit lending cooperatives make loans for all types of recreation-based busi-



nesses, from hunting lodges to scientific deer breeding to quail hatcheries," said Larry Doyle, Farm Credit Bank of Texas chief executive officer. "Today, lending for recreation-based opportunities is one of the most exciting ways we are helping our customers in rural America succeed."

Doyle encouraged people who are considering starting a new business to visit their

local Farm Credit lender.

"When you're looking for a lender, rates and terms are very important," Doyle said. "In addition to that, you should also look for a lender who has a lot of specialty expertise, and will listen to you and customize a loan package that will meet your needs."

Cooperative Structure Offers Additional Benefits

Farm Credit institutions differ from most other lenders because they are cooperatives. The people who borrow from a Farm Credit co-op become owners of it, and, as such, they can vote on business matters, elect the board of directors and share in the earnings through patronage payments.

"Last year, every association in the Tenth District paid a patronage. Together, they returned \$120.5 million in patronage to their borrowers," Doyle said. "In other words, half of the income generated by the associations was returned to its borrower-stockholders. That is a tremendous advantage of doing business with a Farm Credit lender."

There are 20 financing co-ops in the Tenth Farm Credit District, doing business in a five-state territory that includes Alabama, Louisiana, Mississippi, New Mexico and Texas. To find a Farm Credit lender near you, visit www.findfarmcredit.com.

Expectations high for coming deer, dove, teal seasons

The outlook for September's early migratory bird hunting in Texas looks promising, according to wildlife biologists with Texas Parks and Wildlife. Prospects for the deer archery season are excellent as well.

Dove

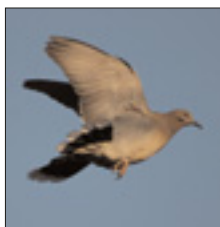
"Above-average precipitation statewide has created ideal habitat conditions for doves," said Jay Roberson, TPW dove program leader.

Roberson said the abundant seed production, predominantly sunflower and croton, will help recently fledged birds to rapidly put on weight. But, quality range conditions could also cause doves to disperse as food sources become readily available and make managed fields less attractive early in the season.

Tim Meador, a guide at Krooked River Ranch near Haskell, is looking forward to the opener. "It should be fabulous," he said. "There are birds everywhere, and the ponds are full, but we don't have way too much water like a lot of places."

In Central Texas, Allen Moorehouse of H.O.T. Guided Hunts said the dove numbers are good, but hunting may be more difficult than last year. "We need it to get hot and dry," he said. "There is a lot of available food, and every tank is full. If it dries out the birds will get back in to a pattern."

More than ever, Moorehouse said scouting will be the key this season. "With all of this water, the birds can go anywhere," he said.



Deer

Bow-hunters are salivating over the deer archery season, less than two months away.

The deer outlook is good to excellent throughout the state, said TPW Big Game Program Director Clayton Wolf.

"It's rare, but it's one of those years where the picture looks good in the whole state," he said. "There has been ample moisture, good fawn recruitment, the antler growth is good and the body weights are up."

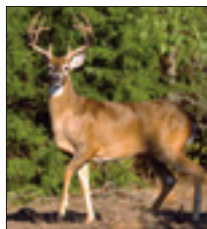
Hunting the animals may be different this year, though. "There is a lot of native forage, and the deer won't have to move as much," Wolf said. "They are going to be less likely to go to the food plots and feeders."

In Northwest Texas, Meador said it could be their best year in a long time. "The range conditions are perfect, and the deer have excellent horns," he said.

In South Texas, Paul Johnson with Vinegarroon Wildlife near Del Rio expects a very good year. "We're going into August with springlike conditions," he said. "We still have forbs, the brush is strong, and the ground temperatures are low."

All of the conditions lead to the opportunity for some record-setting deer. "There's going to be some whoppers killed this year," Wolf said.

Johnson agreed. "Last year was about as bad as it could get," he said. "And this year should be about as good as it gets."



Teal

Teal are expected to arrive in droves in time for the early season opener. "There is lots of rain and water on the coast, and we're looking at the third highest population of bluewings on record heading this way, so it could be unbelievable," said Dave Morrison, TPW's waterfowl program leader.

"Greenwings are also at near-record highs. But, with all the water we have, it could spread the birds out."

Both greenwing and bluewing teal numbers are about 50 percent above the long-term population averages, according to U.S. Fish and Wildlife surveys. "The September teal season has the potential to be one of the best in the last several years," Morrison said.

Moorehouse expects the Central Texas teal season to be great, "although they will have a lot of places to land," he said.

Meador said the prospects for teal in Northwest Texas are outstanding. "Last year was good, and this year there are supposed to be even more birds."

Along the coast, last year's teal hunters enjoyed one of the best seasons ever.

Chris Talbot of South Wind Hunting Adventures described the teal hunting in Colorado County last year as phenomenal. "The prairies are in great shape and the birds are up 14 percent," he said. "We didn't think it could get any better, but there's no reason to think it won't be — unless we get a hurricane."



Find your place in the country...



And the lender who can get you there.

FindFarmCredit.com

*Visit us to find a Farm Credit lender, to locate property for sale,
and to learn what you need to know about buying rural real estate.*



FARM CREDIT

Financing for: Country Homes • Recreational Property • Farms and Ranches • Agribusiness Loans



GMC

MOST POWERFUL ONE-TON V8. EVER.*



Shown with optional Duramax Diesel

INTRODUCING THE ALL-NEW 2007 SIERRA HD, WITH AVAILABLE DURAMAX DIESEL ENGINE AND ALLISON TRANSMISSION. PART OF THE MOST EXTENSIVE LINE OF NEW PICKUPS AVAILABLE

2007 SIERRA 3500 HD CREW CAB

SLE STARTING AT **\$41,735** MSRP**

SLT AS SHOWN **\$44,875** MSRP**

SEE YOUR LOCAL GMC DEALERS TODAY

WE ARE PROFESSIONAL GRADE.® | GMC.

*Based on torque and optional Duramax Diesel engine. Excludes other GM vehicles.

**Tax, title, license, dealer fees and optional equipment extra. See dealer for details.

©2007 General Motors Corp. All rights reserved. The marks of General Motors and its divisions are registered trademarks of General Motors Corp.