

Hunting Texas

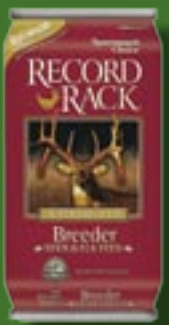
A special advertising supplement of Lone Star Outdoor News.

LSOnews.com



INSIDE

Record Rack



Page 2

Hoffpaur Polaris



Page 4

Alpine Shooting Range and Nikon Riflescopes



Page 6

Nagel's Guns and Nikon Rangefinders



Page 10

UV Country



Page 11

Deer forecast

Page 2

Dove forecast

Page 4

Season dates

Page 8

Sunrise-sunset times for 09-10

Page 8



Annual 2009

Record Rack: high-tech feed for deer



Sportsman's Choice Feeds rethinks deer nutrition from the bag to the belly

Don't feed your deer more, just feed them better.

That's the philosophy behind Sportsman's Choice Feeds, the flagship brand of game feed offered by Cargill Animal Nutrition, which has been producing deer and elk nutrition products for more than three decades.

Among Sportsman's Choice Feeds' most popular products is its Record Rack deer and elk feeds. The result of world-class research and state-of-the-art manufacturing, the Record Rack feeds are the surest way to superior antler development, body condition, reproduction and forage utilization.

Endorsed by some of the nation's leading breeders, hunters and industry-leading brands such as Mossy Oak Bio-Logic, Record Rack delivers:

- Enhanced Nutrient Utilization: Nutrient formulation and "optimum performance" technology increase digestibility of browse and forbs for higher yields and superior condition for animals and their habitats.

- Palatability Plus: The unique and consistent blend of natural ingredients with its exclusive flavoring system ensures maximum palatability and consumption.

- By-Pass Amino Acid Balancing.
- Organic Trace Mineral Complexes: The minerals and organic nutrients provide bio-available sources of trace minerals in ratios that ensure optimum utilization and

enhanced metabolic performance.

- Water Guard Pellets: The pellet design offers built-in weather resistance to keep water out and valuable nutrients in — which means easier feeding, less waste and more bio-available nutrients for optimum performance.

- Water-Resistant Poly-Weave Bag: No more torn or soggy bags.

The feed itself is available in a variety of formulations to meet different nutritional needs.

For professional game managers, Sportsman's Choice Feeds offers its Record Rack Professional line in nuggets, mineral and block form. The feed is designed as a nutritional supplement for free-range conditions for animals that primarily forage.

Game breeders might opt for the breeder formulation, which is designed for deer

who have a limited supply or no access to natural forbs. Combining protein, energy, minerals and vitamins, it is designed for animals in restricted habits.

Sportsmen will appreciate Record Rack's Golden Deer Nuggets and its blended feed, which are tailor-made for superior antler growth and body conditions.

These products are available in hundreds of Texas retailers.

"There's a great demand for these products, as more and more people are seeing the benefits of supplemental feeding," said Sportsman's Choice Brand Manager Heidi Brenner. "Record Rack feed uses state-of-the-art technology and high-quality ingredients to produce the best deer and elk feeds available. Whether a professional game manager, deer breeder, sportsman or wildlife enthusiast, we have products to meet the needs of every customer."

For more information about **Cargill Animal Nutrition**, visit www.cargillanimalnutrition.com.

To learn more about **Sportsman's Choice Feeds'** Record Rack products, visit www.sportsmanschoicefeeds.com.

Drought not a big worry — this year

Adult deer have higher survival rates than fawns

By **Bill Miller**
FOR LONE STAR OUTDOOR NEWS

The unrelenting heat has been particularly bad news for fawns — with questions arising not only on how many will survive the arid conditions, but what their reduced numbers will mean for hunting seasons three or four years down the road.

Grass and weeds were brown and crunchy on Aug. 1 in Goliad County — ground zero for the drought.

Brian Yanta, county extension agent and a member of the county's wildlife management association, said he has measured only 4 inches of precipitation in 2008 and 9 inches so far in 2009.

"We should have 50 inches by now," Yanta said. "It's pretty desperate."

The consequence, he said, is that the fawn survival rate might wind up being in the teens, and cattle and deer were starting to compete for weeds.

"The majority of people have culled their cattle significantly," Yanta said, "but right now, there's hardly any culls left to sell."

Consequently, he said, South Texans, no strangers to damaging hurricanes, will gladly take a gentler storm, if it packs enough rain to replenish the range and fill their stock tanks.

A brighter perspective was reported in West Texas.

"We've had some timely rains," said Harrell Newton, of Blackjack Outfitters in Irion County, west of San Angelo.

He noted that his operation has achieved a 90-percent fawn survival

rate on 11,000 acres, and his supplemental feeding strategy has helped improve horn quality.

"We've taken that ranch from killing 130- to 140-class bucks to 160- and 180-class deer," he said. "You can only supplement so much, but it does a lot of good."

The state stands behind its usual position that Texas deer are OK.

"We still ought to see a continued trend of more mature bucks across the state, especially those areas where we have the antler restriction regulation," said Mitch Lockwood, Texas Parks and Wildlife's white-tailed deer program leader.

The size of those antlers, however, might be reduced in areas where blazing temperatures diminished the nutritional value of natural forage.

Lockwood said the drought began just as soon as the plentiful rains of 2007 ground to a screeching halt in November of that year. In 2008, antler quality slipped, according to TPW data.

"I was kind of thinking it wouldn't be noticeable because of all supplemental feeding going on in the state," Lockwood said. "But it did drop. The deer still depend on good quality natural forage."

August surveys by TPW should answer questions statewide on antler quality among Texas' white-tailed deer herd, estimated to be between 3.5 million and 4 million, Lockwood said.

"We're just eager to see what our surveys are going to show," Lockwood said, adding that the Panhandle received a bunch of rain. The Trans Pecos was pretty green in some areas earlier in the summer.

Among the unknown variables are not just if rain will return, but when, be-



Hunters — and the animals they target — might endure dry conditions when the season begins. Texas' two-year drought might have detrimental effects on deer populations for the next few years.

cause that will determine hunter strategies in the fall.

"If everything is green, hunting under

a feeder, may not be successful," Lockwood said. "So get out and do some rattling or try some other technique."

**Sportsman's
Choice™**

RECORD RACK®

Call 800-367-4894 for a free feeding guideline and to speak with one of our ranch experts to help set up your deer feeding plan!

© 2009 Cargill, Incorporated. All Rights Reserved.



Hoffpaur Polaris,
2114 Hwy. 84,
Goldthwaite, is open
Monday through
Friday from 9 a.m.
to 6 p.m. and
Saturday from 9 a.m.
to 5 p.m. For more
information, visit
www.hpolaris.com or
call (800) 716-5402.

Hoffpaur ranked No. 1 dealer in U.S.

Long-time car dealer
branches out into
world of ATVs

Lee Hoffpaur loves the art of the deal. That no doubt plays a role in the success of his Hoffpaur Polaris dealership in Goldthwaite. "As of right now, we're the No. 1 Ranger dealer in the U.S.," he said. He and his staff move about 75 units a month to customers who travel to the dealership from all over Texas. Hoffpaur, who has a background in car sales and owns a few car dealerships, bought the ATV and UV dealership in 2007.

"I always thought Polaris was the best product. I thought it would be a neat little adventure," he said.

Within the first year, the business quickly expanded to the point where a bigger facility was needed. In 2008, the dealership moved into its new building, which sits on Highway 84 on the outskirts of this tiny Texas town.

His main customers include hunters, landowners, farmers — and anyone who appreciates the gas efficiency and agility that all-terrain and utility vehicles offer.

And all are welcome to haggle.

Hoffpaur's staff also can customize the vehicle, outfitting it to the specifications of its new owner. "We can put just about anything on them," he said. "If you can imagine it, we can probably put it on there."

At the Hoffpaur Outdoor Super Store, customers will find not only Polaris' Rangers, Ranger RZR's, Sportsmans and more, they'll also find Arctic Cat ATVs and Cub Cadet tractors and UVs. The store also carries Troy-Bilt mowers, Big Tex trailers, Haulmark trailers and Outdoor Feeders.

As for the Polaris vehicles, his best-selling model is the Polaris Crew Cab, a side-by-side larger utility vehicle that can seat up to six people.

"It's leading the pack right now and has since it came out," Hoffpaur said.

Come September, customers can look forward to new 2010 Polaris models.

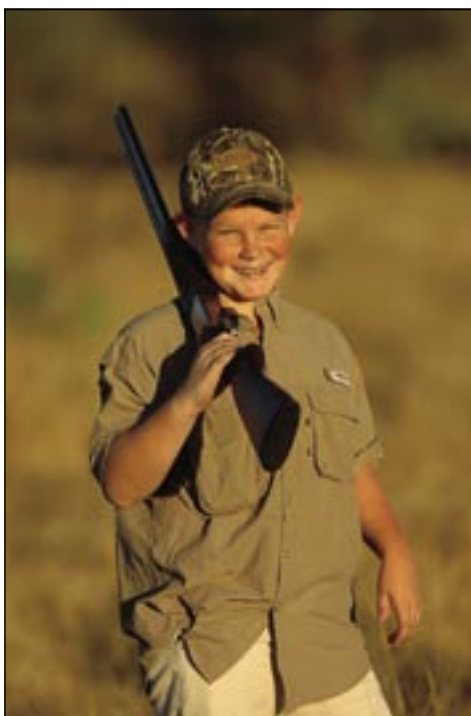
Among them are:

- The Ranger EV: This is an electric-powered side-by-side mid-sized vehicle. It is clean and quiet and offers a top speed of 25 mph and a 50-mile range. Among its

features are a 30 HP, 48-volt high-efficiency AC-inducted electric motor, smooth independent rear suspension and the ability to recharge at a standard 220V AC outlet. It is compact enough to fit in a full-size pickup.

- The Ranger 400: This is a mid-sized side-by-side. Designed for power and agility, it can go up to 40 mph and offers such features as a 29 HP, 455cc engine and a smooth independent rear suspension. It, too, will fit into a full-size pickup.

- The Ranger 800 Crew: This hard-working side-by-side boasts unmatched traction and can seat up to six people. Key features include a 40 HP, 760 cc twin cylinder EFI engine, an enlarged cab, smooth independent rear suspension, 2,000-pound towing capacity, and 29 gallons of under-seat storage.



Texas dove hunters should see plenty of birds this fall. The Lone Star State annually claims about 30 percent of the total dove harvest in the United States.

Texas hunters will likely retain dove harvest crown

Hunters will have to pick
the right spots before shots

By Bill Miller
FOR LONE STAR OUTDOOR NEWS

Texas is the place to be to hunt doves. Each year, Texas averages about 350,000 dove hunters who shoot about 6 million birds — an astounding 30 percent of the total U.S. harvest.

White-winged dove populations remain strong in South Texas, said Corey Mason, dove program leader for Texas Parks and Wildlife.

And, he added, it's no secret, mourning dove are abundant in Coleman, Taylor, Williamson, Atascosa and Bexar counties.

Also this year, Texas Parks and Wildlife has made it a little easier for hunters by allowing a 70-day season and slightly larger bag limits statewide. It used to be a 12-bird daily limit, now it's 15.

"All in all, we're expecting a good dove season," Mason said.

But drought conditions this year will challenge wing shooters to find the right spots to hunt.

It's not rocket science; hunters have always known that the dove zoom between food, shelter and water. The problem is that excessive heat has reduced crops and water levels at some favorite spots.

"I'm not saying drought is a good thing for dove," Mason said, "but drought, more often than not, is the norm in Texas.

"I think they can tolerate it."

Game plan

Dario Abrego of All Around Outfitters expects to beat the heat by selecting hunting areas close to the city limits of San

Antonio, especially on the south side.

That way, he explained, his hunters can target birds that nest in the mature trees of nearby residential areas and then fly to close-in agricultural fields.

Being close to the city, there are ready sources of water, Abrego said.

"I think it helps a great deal," he said, "because the birds don't have to travel so far; not that they won't travel, but it's easier."

"I'm kind of blessed with these places. I'm inundated."

On the opposite end of the state, Alan Schaffner of Lone Star Hunts near Wichita Falls is also optimistic.

"I'm just seeing a lot of birds," he said. "I'm always pretty conservative with hunters; I don't like to get people's hopes up."

"But I think, right now, the birds rank good. It's hard to say why. But there has been a good hatch of birds, it seems to me."

Ronnie Gassiot of San Angelo, who hosts hunters on ranches near Lohn and Fife, north of Brady in McCulloch County, is also seeing a lot of birds, and some of them are awfully plump.

Heavy rains the first weekend of August gave the Heart of Texas landscape a fresh coat of green, which ought to help dove habitat.

"Until we got that rain, it looked pretty bleak," Gassiot said, "but we got 3 1/2 inches of rain, and that turned the whole world around."

"It doesn't look like a desert anymore." Gassiot added, however, that the beneficial rains may have come a tad late.

"If we had gotten good rains in June and July, we could've gotten some good sunflowers this year," he said. "I really think its going to be a fair year. I don't think it

will be outstanding."

Set your calendar

TPW decided the season for the North and Central Dove Zones will run Sept. 1-Oct. 25 and Dec. 26-Jan. 9, with a 15-bird bag limit and not more than two white-tipped doves.

The South Zone dove season is Sept. 18-Nov. 3, but it reopens Dec. 26-Jan. 17; again with a 15-bird bag limit and not more than two white-tipped doves, TPW said.

Also, there is a Special South Texas White-winged Dove Area that will open to white-winged dove afternoon-only hunting the first two full weekends in September — Sept. 5-6 and 12-13 — and reopen when the regular South Zone season begins.

The Special White-winged Dove Area season takes four of the allowable 70 days, TPW said.

So, the agency added, when the regular season opens, this area must close four days earlier than the rest of the South Zone. The daily bag limit is 15 birds, but not more than four mourning doves during the first two weekend splits and two white-tipped doves. But after the general season opens, the aggregate bag limit will be 15, TPW said.

Mason said TPW officials wanted the season adjustments to avoid confusion about when seasons start and stop from zone to zone. The larger bag limits are intended to spur more enthusiasm among hunters.

"Doves are kind of a window species," he said. "A lot of people are initiated into hunting through dove — like youth. They're generally accessible to urban areas, and it's not something where you have to sit for long periods of time and freeze."

"Actually, you'll probably sweat a lot."

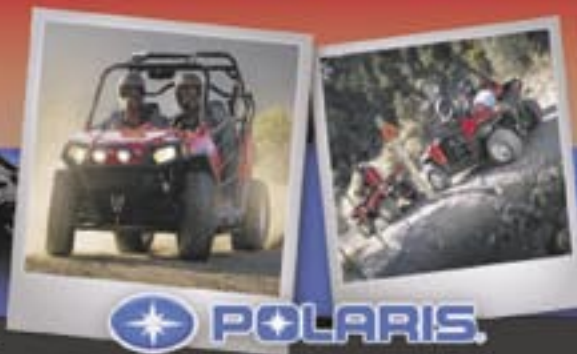
"I'm just seeing a lot of birds. I'm always pretty conservative with hunters; I don't like to get people's hopes up. But I think, right now, the birds rank good."

Alan Schaffner
Outfitter
Wichita Falls

call us toll free:
800.716.5402



Hoffpauir
POLARIS



POLARIS

2114 Highway 84 • Goldthwaite, Texas 76844 • 325.648.3341 • FAX: 325.648.2653

NO REPAIR/SERVICE DELAYS!

No Appointment Necessary — Walk-ins Welcome
On All Repair and Maintenance Work

**2009 POLARIS
RANGER 2x4**

MSRP \$7,999
H DISC 1,000

\$6,999 + TTL

15 IN STOCK!



**2009 POLARIS
RANGER 6x6**

MSRP \$11,499
H DISC 1,500

\$9,999 + TTL

4 IN STOCK!



**2008 POLARIS
500 EFI
4x4**

MSRP \$7,399
REBATE 700
H DISC 700

\$5,999 + TTL

7 IN STOCK!



**2009 POLARIS
RANGER
RZR 170
YOUTH MODEL**

MSRP

\$3,695 + TTL

6 IN STOCK!



**2009 POLARIS
RANGER
CREW 4x4**

MSRP \$11,499
REBATE 800
H DISC 700

\$ 9,999
+ TTL



**2009 POLARIS
RANGER
500 4x4**

MSRP \$9,699
REBATE 400
H DISC 300

\$8,999 + TTL



**2009 POLARIS
RANGER XP**

MSRP \$10,799
REBATE 800
H DISC 300

\$9,699
+ TTL



**2009 POLARIS
RZR**

MSRP \$10,799
REBATE 500
H DISC 1,300

\$8,999

15 IN STOCK!



G
R
E
A
T
S
E
L
E
C
T
I
O
N
O
F
C
R
E
W
C
A
B
R
A
N
G
E
R
S

WE ARE ALSO YOUR DEALER FOR THE FOLLOWING PRODUCTS:



Huge Selection Of Pre-Owned ATV's And Rangers See Them At: www.hautogroup.com

* Plus Applicable Fees
* Photos For Illustration Purposes Only

Alpine Shooting Range: all-purpose gun center

Long-serving Fort Worth business becomes a top Nikon Sport Optics dealer

For more than four decades, Alpine Shooting Range has been attracting hunters aiming to improve their shooting.

While there is no doubt that hunters anticipating the hunting season keep the rifle ranges hopping during the fall, the Fort Worth business attracts a variety of customers year-round.

"We have a pretty good mix — mostly hunters and recreational shooters. We also have a lot of families who come out and shoot on weekends," said owner David Smith.

Beginners to experts are welcome at the facility, which offers two rifle ranges and five pistol ranges plus an archery range where bow-hunters will find life-sized 3D animal targets and sight-in targets.

Lessons in trap and skeet shooting are available as are gun and hunter safety courses.

Smith and his staff also host corporate and charity events. A 2,500-square-foot club building will seat up to 75 people, with more room outdoors for larger gatherings. Two charity events are planned in August: a Big Brothers/Big Sisters Sporting Clay Shoot (Aug. 22) and a New Day Series Sporting Clay Shoot (Aug. 29).

A major draw at Alpine Shooting Range is the 5,000-square-foot full-line shooting sports and hunting supply store. It is stocked with "pretty much anything that a shooter might need," including guns, ammunition, knives, clothing, optics and more.

Among the brands the store carries are such venerable names as Browning, Benelli, Smith & Wesson and, of course, Nikon.

"We're one of the bigger dealers in the area," Smith said of the Nikon Sport Optics' products his store carries. "We probably sell more Nikon than any one other brand."

One of the most popular Nikon optics among hunters is the Monarch rifle scope.

"They've sold really well," Smith said. Nikon designed the Monarch around a new optical system that the company says gives shooters increased versatility and superlative performance with virtually any type of rifle, in any caliber and in any imaginable hunting situation.

The Monarch riflescopes, which come in a variety of magnifications, are available with Nikon's patented BDC reticle. The BDC's see-through ballistic circles offer an advantage for long-range shooting while allowing a normal sight picture for shorter-range shots.

How does Smith know his customers are happy with the Monarch riflescopes? "We haven't had any returns on them. And, we've had many repeat customers."

Alpine Shooting Range, 5482 Shelby Road in Fort Worth, opens at 8 a.m. seven days a week. For more information, call (817) 478-6613 or visit www.alpinerange.com.

For a full description of **Nikon Sport Optics'** Monarch riflescopes and other Nikon products, visit www.nikonsportoptics.com or call (800) 248-6846.



David Smith keeps North Texas hunters and sport shooters sighted in and on target at Alpine Shooting Range in Fort Worth. Photo by Lili A. Sams.

eXmark

"I spend less time mowing and more time hunting."
— Bill Jordan, President and Founder of Realtree

Get off your yard and into the outdoors faster than ever with Exmark mowers. Our professional-grade Zero-Turn mowers give you great results in record time. Find out more at one of our 1,500 servicing dealers, or call 877-EXMARK for more info.

Look For The 2009 Exmark Outdoor Tour, powered by **Kawasaki**. See Tour dates, outdoor gear reports, news, techniques and tip videos and more online at www.exmarkoutdoors.com.

Exmark riders available for as low as **\$40 per month*** No payment, deferred interest for 12 months or Low APR programs also available.**
*See Dealer for complete financing details.

Made in the USA ★ **Front Bumper Replacements**

Headache Rack Systems ★

Back Bumpers ★ **Grille Guards and much more!**

Mention this ad for a special offer at our outlet locations!

San Antonio 877-530-0073	Boerne 877-249-5601	Houston 800-259-4436
Oklahoma City 800-436-0612	Irving 888-859-8074	Colorado Springs 866-786-6770

www.ranchhand.com

RANCH HAND
TRUCK ACCESSORIES

800-366-9712

Premium Tools for Texas Hunters



You already know that Texas offers the most diverse hunting opportunities of any state. The folks at Nikon are committed to providing you with world-class hunting optics that are worthy of the strong hunting heritage that Texas holds. Whether you're glassing a Sendero in Zapata County, or bearing down on a 160 Class buck in the Canadian River Bottom, Nikon makes premium "tools" for Texas hunters.



www.nikonhunting.com

Larry Weidman —
Professional Wildlife Biologist,
TV Host and award-winning author



2.5-10x42
Monarch Matte BDC
\$399.95

- Monarch Eye Box Technology
- Smooth zoom control
- Locking side focus parallax adjustment
- Enhanced mount ring spacing
- Nikon BDC reticle technology
- Interchangeable turret technology
- Ultra ClearCoat® Optical System
- One-piece main body tubes
- Sunshade adaptable
- Waterproof, Fogproof, Shockproof
- Lifetime Full Warranty



5-20x44SF
Monarch Matte BDC
\$529.95

- Monarch Eye Box Technology
- Smooth zoom control
- Locking side focus parallax adjustment
- Enhanced mount ring spacing
- Nikon BDC reticle technology
- Interchangeable turret technology
- Ultra ClearCoat® Optical System
- One-piece main body tubes
- Sunshade adaptable
- Waterproof, Fogproof, Shockproof
- Lifetime Full Warranty



3-9x40
Buckmasters Matte BDC
\$219.95

- Exceptional scope, incredible price
- Guaranteed waterproof, fogproof and shockproof
- Hand-turn 1/4-MOA reticle adjustments
- Side focus adjustment on long range models
- Brightvue® multicoating for up to 92% light transmission
- Sunshade adaptable (except 1x20)

Visit this Premier Texas Nikon Dealer

Alpine Range Supply

(817) 478-6613 5482 Shelby Road Ft. Worth, TX 76140



2009 Hunting Season Dates



DOVE
North Zone and Central Zone Sept. 1-Oct. 25, Dec. 26-Jan. 9
South Zone Sept. 18-Nov. 3, Dec. 26-Jan. 17
 Bag limit: 15 birds and not more than two white-tipped doves.
Special White-winged Dove Area Sept. 5, 6, 12-13, Sept. 18-Nov. 3, Dec. 26-Jan. 13
 The daily bag limit in the SWWDA is 15 birds, not more than four mourning doves during the first two weekend splits and 2 white-tipped doves. Once the general season opens, the aggregate bag limit will be 15.

SQUIRREL
Special Youth Season** Sept. 26-27
East Texas (51 counties) Oct. 1-Feb. 7, May 1-31
Other Open counties Sept. 1-Aug. 31 (see County Listings)

LESSER PRAIRIE CHICKEN
 No open season for lesser prairie chicken.

EARLY TEAL-ONLY Sept. 12-27

QUAIL
Statewide (all counties) Oct. 31-Feb. 28

ALLIGATOR
22 counties & special properties Sept. 10-30 (by permit only)
Remainder of the state Apr. 1-June 30

RIO GRANDE TURKEY
Archery-Only Season Oct. 3-Nov. 6
Fall Season Special Youth Season* Oct. 31-Nov. 1, Jan. 16-17
 North Zone (122 counties) Nov. 7-Jan. 3
 South Zone (26 counties) Nov. 7-Jan. 17
 Brooks, Kenedy, Kleberg, & Willacy counties Nov. 7-Feb. 28
Spring Season North Zone (101 counties) Apr. 3-May 16
 Special Youth Season* Mar. 27-28, May 22-23
 South Zone (54 counties) Mar. 20-May 2
 Special Youth Season* Mar. 13-14, May 8-9
 1-Turkey Bag Limit (11 counties) Apr. 1-30

PRONGHORN ANTELOPE
35 counties (by permit only) Oct. 3-11

WHITE-TAILED DEER
Archery-Only Season Oct. 3-Nov. 6
Special Youth Season* Oct. 31-Nov. 1, Jan. 4-17
General Season North Texas (206 counties) Nov. 7-Jan. 3
 South Texas (30 counties) Nov. 7-Jan. 17
Late Antlerless and Spike Edwards Plateau (39 counties) Jan. 4-17
 South Texas (30 counties) Jan. 18-31
Muzzleloader (57 counties) Jan. 4-17

EASTERN TURKEY+
Spring-Only Season East Texas (43 counties) Apr. 1-30

MULE DEER
Archery-Only Season Oct. 3-Nov. 6
General Season Panhandle (38 counties) Nov. 21-Dec. 6
 SW Panhandle (10 counties) Nov. 21-29
 Trans-Pecos (19 counties) Nov. 28-Dec. 13

CHACHALACA
 Cameron, Hidalgo, Starr & Willacy counties Oct. 31-Feb. 28

JAVELINA
(43 counties) Oct. 1-Feb. 28
(50 counties) Sept. 1-Aug. 31

RABBITS and HARES No closed season.

PHEASANT
Panhandle (37 counties) Dec. 5-Jan. 3
Chambers, Jefferson & Liberty counties Oct. 31-Feb. 28

In addition to a hunting license, a migratory game bird stamp endorsement (\$7) is required to hunt any migratory game bird, including mourning dove (a Federal Sandhill Crane Permit also is required to hunt sandhill crane). An upland game bird stamp endorsement (\$7) is required to hunt turkey, quail, pheasant or chachalacas. See County Listings in the *Texas Parks and Wildlife Outdoor Annual* for specific county regulations and more detailed information.
 *In all counties that have an open season for those species.
 ** In all counties that have an Oct. 1-Feb. 7 and May 1-31 Open Squirrel Season.
 + Rio Grande and Eastern Turkey may be hunted in these counties.

DOWNLOAD
 The charts for season dates and sunrise and sunset are available for download at LSOnews.com.

----- Clip for your camp -----

Sunrise-Sunset

September 2009 to February 2010



September				October				November				December				January				February			
Date	Day	Rise	Set	Date	Day	Rise	Set	Date	Day	Rise	Set	Date	Day	Rise	Set	Date	Day	Rise	Set	Date	Day	Rise	Set
1	Tue	7:08	7:53	1	Thu	7:25	7:16	1	Sun	6:45	5:43	1	Tue	7:10	5:30	1	Fri	7:28	5:42	1	Mon	7:22	6:08
2	Wed	7:08	7:52	2	Fri	7:25	7:15	2	Mon	6:46	5:42	2	Wed	7:11	5:30	2	Sat	7:28	5:42	2	Tue	7:21	6:09
3	Thu	7:09	7:51	3	Sat	7:26	7:13	3	Tue	6:47	5:42	3	Thu	7:12	5:30	3	Sun	7:28	5:43	3	Wed	7:20	6:09
4	Fri	7:10	7:50	4	Sun	7:26	7:12	4	Wed	6:48	5:41	4	Fri	7:12	5:30	4	Mon	7:28	5:44	4	Thu	7:20	6:10
5	Sat	7:10	7:48	5	Mon	7:27	7:11	5	Thu	6:49	5:40	5	Sat	7:13	5:30	5	Tue	7:28	5:45	5	Fri	7:19	6:11
6	Sun	7:11	7:47	6	Tue	7:28	7:10	6	Fri	6:49	5:39	6	Sun	7:14	5:30	6	Wed	7:28	5:46	6	Sat	7:18	6:12
7	Mon	7:11	7:46	7	Wed	7:28	7:09	7	Sat	6:50	5:39	7	Mon	7:15	5:30	7	Thu	7:28	5:46	7	Sun	7:18	6:13
8	Tue	7:12	7:45	8	Thu	7:29	7:08	8	Sun	6:51	5:38	8	Tue	7:15	5:31	8	Fri	7:29	5:47	8	Mon	7:17	6:14
9	Wed	7:12	7:43	9	Fri	7:29	7:06	9	Mon	6:52	5:37	9	Wed	7:16	5:31	9	Sat	7:29	5:48	9	Tue	7:16	6:15
10	Thu	7:13	7:42	10	Sat	7:30	7:05	10	Tue	6:53	5:37	10	Thu	7:17	5:31	10	Sun	7:29	5:49	10	Wed	7:15	6:15
11	Fri	7:13	7:41	11	Sun	7:31	7:04	11	Wed	6:53	5:36	11	Fri	7:17	5:31	11	Mon	7:29	5:50	11	Thu	7:14	6:16
12	Sat	7:14	7:40	12	Mon	7:31	7:03	12	Thu	6:54	5:36	12	Sat	7:18	5:31	12	Tue	7:28	5:50	12	Fri	7:14	6:17
13	Sun	7:14	7:38	13	Tue	7:32	7:02	13	Fri	6:55	5:35	13	Sun	7:19	5:32	13	Wed	7:28	5:51	13	Sat	7:13	6:18
14	Mon	7:15	7:37	14	Wed	7:33	7:01	14	Sat	6:56	5:35	14	Mon	7:19	5:32	14	Thu	7:28	5:52	14	Sun	7:12	6:19
15	Tue	7:16	7:36	15	Thu	7:33	7:00	15	Sun	6:57	5:34	15	Tue	7:20	5:32	15	Fri	7:28	5:53	15	Mon	7:11	6:19
16	Wed	7:16	7:35	16	Fri	7:34	6:59	16	Mon	6:58	5:34	16	Wed	7:21	5:33	16	Sat	7:28	5:54	16	Tue	7:10	6:20
17	Thu	7:17	7:33	17	Sat	7:35	6:57	17	Tue	6:58	5:33	17	Thu	7:21	5:33	17	Sun	7:28	5:55	17	Wed	7:09	6:21
18	Fri	7:17	7:32	18	Sun	7:35	6:56	18	Wed	6:59	5:33	18	Fri	7:22	5:34	18	Mon	7:28	5:56	18	Thu	7:08	6:22
19	Sat	7:18	7:31	19	Mon	7:36	6:55	19	Thu	7:00	5:32	19	Sat	7:22	5:34	19	Tue	7:27	5:56	19	Fri	7:07	6:23
20	Sun	7:18	7:30	20	Tue	7:37	6:54	20	Fri	7:01	5:32	20	Sun	7:23	5:35	20	Wed	7:27	5:57	20	Sat	7:06	6:23
21	Mon	7:19	7:28	21	Wed	7:37	6:53	21	Sat	7:02	5:32	21	Mon	7:23	5:35	21	Thu	7:27	5:58	21	Sun	7:05	6:24
22	Tue	7:19	7:27	22	Thu	7:38	6:52	22	Sun	7:03	5:31	22	Tue	7:24	5:36	22	Fri	7:26	5:59	22	Mon	7:04	6:25
23	Wed	7:20	7:26	23	Fri	7:39	6:51	23	Mon	7:03	5:31	23	Wed	7:24	5:36	23	Sat	7:26	6:00	23	Tue	7:03	6:26
24	Thu	7:21	7:25	24	Sat	7:39	6:50	24	Tue	7:04	5:31	24	Thu	7:25	5:37	24	Sun	7:26	6:01	24	Wed	7:02	6:26
25	Fri	7:21	7:23	25	Sun	7:40	6:49	25	Wed	7:05	5:31	25	Fri	7:25	5:37	25	Mon	7:25	6:02	25	Thu	7:01	6:27
26	Sat	7:22	7:22	26	Mon	7:41	6:48	26	Thu	7:06	5:31	26	Sat	7:26	5:38	26	Tue	7:25	6:03	26	Fri	7:00	6:28
27	Sun	7:22	7:21	27	Tue	7:42	6:48	27	Fri	7:07	5:30	27	Sun	7:26	5:38	27	Wed	7:24	6:03	27	Sat	6:59	6:28
28	Mon	7:23	7:20	28	Wed	7:42	6:47	28	Sat	7:08	5:30	28	Mon	7:26	5:39	28	Thu	7:24	6:04	28	Sun	6:58	6:29
29	Tue	7:23	7:18	29	Thu	7:43	6:46	29	Sun	7:08	5:30	29	Tue	7:27	5:40	29	Fri	7:23	6:05				
30	Wed	7:24	7:17	30	Fri	7:44	6:45	30	Mon	7:09	5:30	30	Wed	7:27	5:40	30	Sat	7:23	6:06				
				31	Sat	7:45	6:44					31	Thu	7:27	5:41	31	Sun	7:22	6:07				

Times given above are for Austin. For other locations, subtract 1 minute per 12 miles east of a location, and add 1 minute per 12 miles west of a location. The table below gives adjustments for some Texas cities. Information provided is the longitudinal distance from Austin and the time adjustment for sunrise and sunset. For specific locations, visit LSOnews.com.

Abilene 110 miles west add 9 minutes
Alpine 350 miles west add 29 minutes
Beaumont 215 miles east subtract 18 minutes
Corpus Christi 20 miles east subtract 2 minutes
Dallas-Fort Worth 40 miles east subtract 3 minutes
Del Rio 180 miles west add 15 minutes
El Paso* 500 miles west subtract 18 minutes

Houston 125 miles east subtract 10 minutes
Laredo 105 miles west add 9 minutes
Lubbock 225 miles west add 19 minutes
San Angelo 160 miles west add 13 minutes
San Antonio 40 miles west add 3 minutes
Tyler 130 miles east subtract 11 minutes
 *El Paso is in Mountain Time Zone.

Introducing Grand Oaks Ranch



Live your dreams on this exclusive 1465 acre Texas hill country hunting club and shared ranchette masterpiece. Own one of ten deeded 25 acre parcels of this ranch and take advantage of 1065+/- undivided interest acres of prime hunting land and the 5000 square foot master lodge. Amenities on the ranch are five star and the hunting is excellent, including outstanding whitetail, axis deer, black buck, fallow, rams, elk, turkey and more. For information on investing in your dream hunting property, call 830-866-3860 or 830-329-8800, or visit www.GrandOaksRanch.com. Owner Financing Available.

Your Adventure Awaits!

The World's **LARGEST** Dealer of Sports Optics!

\$599⁹⁵
Leupold 10x42
Golden Ring Boons &
Crockett Kit
60% OFF

ZEISS
\$1,074⁹⁵
Zeiss 6.5-20x50
Conquest
\$214309975

WEAVER
FREE \$125
Gear Bag w/
Purchase of any
Weaver Grand Slam
or Super Slam
Binocular
\$399⁹⁵
Weaver 10x42
Grand Slam Binocular
\$49628



Check Out
SWFA.com 2.0!
New Look! New Features!

PENTAX
\$169⁹⁵
Pentax 4-12x40
Gameseeker w/ 10x42 Binocular
\$290000

Bushnell
\$89⁹⁵
Bushnell 3-9x40
Trophy Rifle Scope
w/ FREE Laser Bore-sighter
723948.8

AUTHORIZED DEALER
\$749⁹⁵
Swarovski
Lightweight American
Scopes
ON SALE!
Swarovski 3-9x36
American Riflescope
\$2043

Leica
\$1,345⁰⁰
ON SALE!
10x42
Leica Geovid
Rangefinding Binoculars
Sale priced at \$1,695
before \$350 Factory Rebate.
After rebate you pay \$1,345.
40039

Leica
\$599⁹⁵
Leica 7x24
CRF Pinmaster
40532

ON SALE!
50% off our normal
price
Nikon
\$249⁹⁵
Nikon 16-48x60 XL II
Spotting Scope
6890

ZEISS
\$699⁹⁵
Zeiss 8x26
Victory Rangefinder
\$24560

BURRIS
ON SALE!
\$99⁹⁵
10x42
Burris Landmark II Binoculars
(Sells 35% off our normal price)
300192

AUTHORIZED DEALER
\$1,688⁹⁵
Swarovski 10x32
EL Binocular
30200

Talley
\$42⁹⁵
Talley 1" Scopemount
Aluminum
\$40700

PENTAX
\$59⁰⁰
EACH
3-9x40 Gameseeker
Riflescope
89719
4-12x40 Gameseeker
Riflescope
89720

OPTICSTALK.COM
Get Professional Advice From One of
Our 10,000 Members

**\$1,000,000 Inventory of
SAMEE EISENBERG
Demo Optics**

or call **1-972-SCOPE IT** (1-972-726-7348)

Order online at
SWFA.com

Ron Farington, general manager of Nagel's Gun Shop in San Antonio, sells a variety of Nikon rangefinders. Photo by Erich Schlegel.



Nagel's Gun Shop, 6201 San Pedro Ave., San Antonio, is open 9 a.m. to 6 p.m. Monday through Saturday. For more information, call (210) 342-9893 or visit www.nagelsguns.net.

For more information about Nikon's rangefinders, visit www.nikonsportoptics.com.

Nagel's knows guns, rangefinders

San Antonio store has a history of serving hunters

Nagel's Gun Shop began humbly in a garage. Homer Nagel paired up with his son, Bobby, in the 1940s to begin what would become a family dynasty.

Now, the Nagel name is renowned in Texas — and nationally — by gun enthusiasts: Bobby is often called upon for his weaponry expertise, particularly for Colts and Winchesters.

The elder Nagel retired in the 1970s, but the San Antonio store continues to be a father-and-son business with Bobby and his son, Robert, overseeing the

operation.

Nagel's has been in its current location on San Pedro Avenue since 1950, first in a little cubby of a space in a strip mall before eventually expanding to take over the entire earth-colored building.

It would be fair, said General Manager Rob Farington, to describe the store as jam-packed with merchandise.

First-time visitors are often surprised with the quantity and quality of the merchandise offered in this treasure trove for shooters.

"We're an Old Western type of store. We've got everything that can be put in a store," said Farington, who has been Nagel's general manager for almost a decade.

The store carries top branded firearms, ammunition, reloading supplies, clothing, gun cases and safes, accessories and perhaps the largest knife gallery in the state.

Nagel's employs 28 people, including four gunsmiths. The staff is preparing for the busiest time of the year. Handguns are consistent all year long, said Farington, but come fall, the store will become increasingly busy as hunters prepare for hunting season.

The key to the success of Nagel's, Farington said, is that the staff listens to what the customer wants and provides superior service.

"You would have no trouble at all if you came in here and said, 'I need help.'"

But Nagel's also carries quality products at competitive pricing.

One of the more popular products carried by the store is Nikon Sports Optics' rangefinders.

Nagel's carries a variety of Nikon's rangefinders and other Nikon Sport Optics products.

Nikon's pocket-sized, waterproof, fog-proof rangefinders are engineered especially for hunters who are looking for extreme long-range precision and long-term durability. Featuring cutting-edge technology, the lightweight rangefinders ensure range measurement accuracy — depending on the model — up to 1,200 yards with a push of a button.

They're that little extra edge that hunters take along on a hunt, Farington said.

Nooner Ranch

Lone Star Outdoor News
Special Harvest Deal

\$4,500

- 150-159 B&C, plus \$100 per inch
- Larger deer available
- 3 days, 2 nights
- Meals & Lodging
- Guide

Contact

Chris Keller: ckeller9187@aol.com

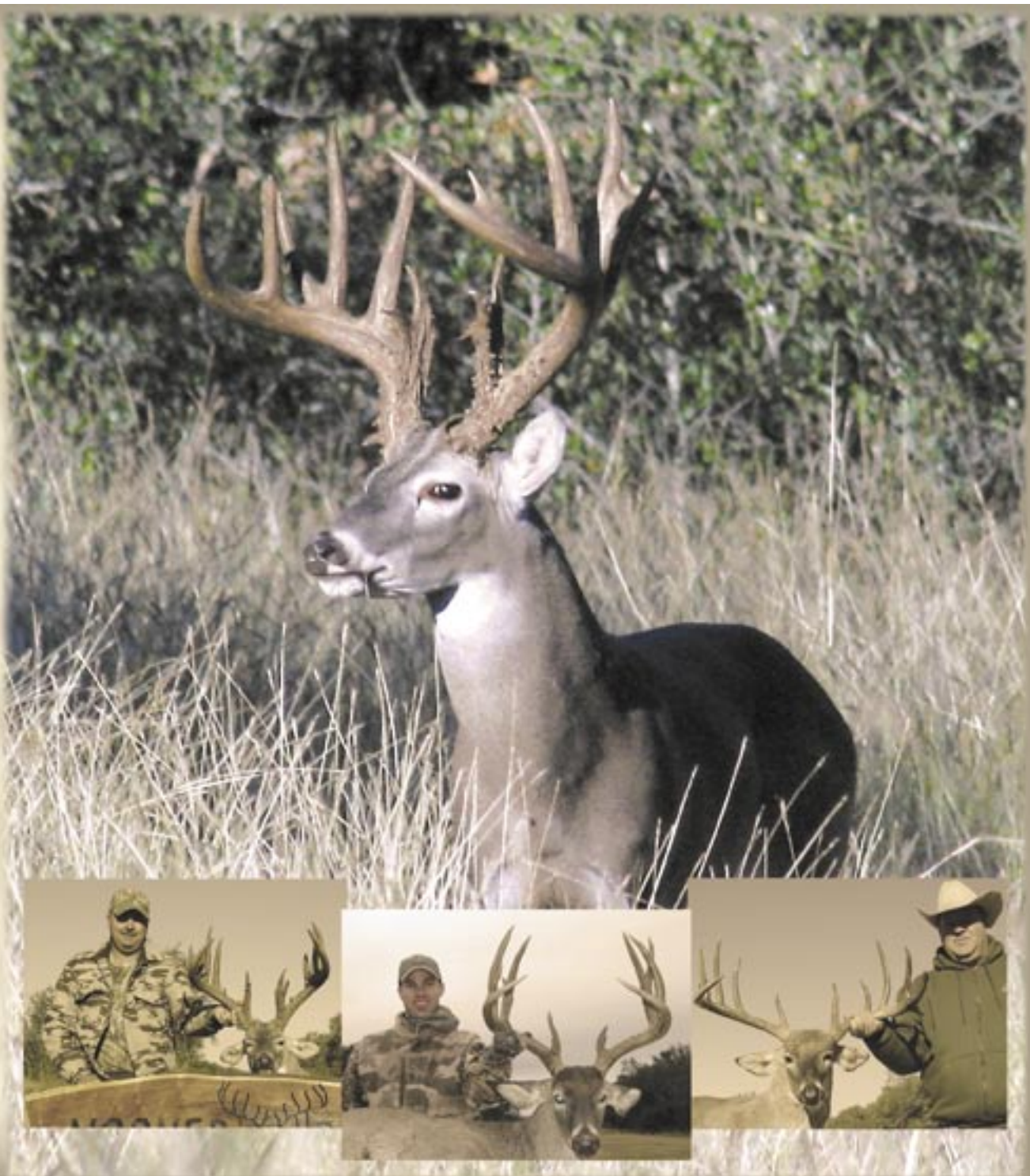
Office: 830-741-8614

Gene Naquin: 210-508-0113

Gery Keller: 210-275-0536

www.NoonerRanch.com

Nooner Ranch • D'Hanis, Texas



UV Country serves hunters, country

Vehicles give freedom to ride

U.S. Navy veteran Shannon Tracy and husband Scott Tracy own UV Country Kawasaki, a unique utility vehicle dealership.

They specialize in sales, service, parts, customizing and outfitting for the Kawasaki Mule and Kawasaki Teryx as well as custom outfitting for the Polaris Ranger and the Kubota RTV.

UV Country Kawasaki is located minutes from downtown Houston, Reliant Stadium and Houston's Hobby Airport.

Upon arrival at the showroom, visitors will be met by a warm and welcoming interior, a knowledgeable sales staff, a well-stocked (and efficient) parts and service department and an impressive selection of Kawasaki Mule and Teryx utility vehicles.

When customers first inquire about a Kawasaki Mule or Teryx, they will be asked how they are going to use the vehicle, what kind of terrain they will be on, and how often will they be using it.

From there, Shannon or someone from her staff will steer customers to the model that will best suit their



Shannon and Scott Tracy sell utility vehicles to civilians and the military.

needs.

"We can sell you a base model or a highly customized model," Shannon said. The on- and off-road UVs run anywhere from \$6,000 for the basic model all the way up to \$12,000 to \$20,000, depending on how it is outfitted and customized.

Their best-selling model is the Kawasaki Mule Trans 4x4, which includes power steering, and is available in gas and diesel.

UV Country Kawasaki has grown to become the No. 1 Kawasaki Mule and Teryx dealership in the U.S. It recently was awarded a substantial government contract with U.S. SOCOM. UV Country Kawasaki will be supplying U.S. Special

Operations Command with up to 1,625 Teryxes within the next five years.

UV Country Kawasaki also has a federal and state contract for the Kawasaki Mule and Kawasaki Teryx.

Located at 5727 Hogue St., **UV Country Kawasaki** is open Monday through Friday from 9 a.m. to 6 p.m. and Saturday from 9 a.m. to 3 p.m. For more information or directions, call (713) 649-0556 or visit www.uvcountry.com.

YOUR MOTHER SAID MONSTERS DIDN'T EXIST SHE WAS WRONG.

Kawasaki TERYX MONSTER 750 FI 4x4 **Kawasaki MULE™** **Kawasaki**

AUTHORIZED DEALER • SALES • SERVICE • PARTS

UV COUNTRY, Inc. is Houston's only authorized **Kawasaki MULE & TERYX** dealership specializing in **UTV** custom outfitting, parts, sales and service. Stop by our showroom for a test drive and visit our website.

www.UVCOUNTRY.com • 5727 Hogue St. • Houston Texas • 713.649.0556
TXMAS 5-78060 A Texas Veteran Woman-Owned Small Business GSA GS-07F-5823R

Kawasaki TERYX **Kawasaki MULE™**

HOMES for OUR TROOPS
www.homesforourtroops.org

HUNTS FOR HEROES
VETERAN OUTDOORS
GIVING BACK TO THOSE WHO GAVE

#1 Kawasaki MULE & TERYX Dealership in the USA

Specializing in Sales, Parts, Service, Custom Outfitting of the Kawasaki TERYX (RUV) and the Kawasaki MULE Utility Vehicle.

TAKE A CHANCE...HELP OUT A VETERAN...YOU COULD WIN...RAFFLE TICKETS ON SALE NOW...Hunts for Heroes/Veteran Outdoors UV Country Custom Kawasaki MULE and Homes for Our Troops UV Country Custom Kawasaki TERYX Raffle.

Please visit our website, uvcountry.com for more details.

A Texas Veteran Woman-Owned Small Business located in Houston, TX.

www.UVCOUNTRY.com • 713.649.0556

GSA Contract GS-07F-5823R & TXMAS Contract 5-78060

Premium Tools for Texas Hunters



You already know that Texas offers the most diverse hunting opportunities of any state. The folks at Nikon are committed to providing you with world-class hunting optics that are worthy of the strong hunting heritage that Texas holds. Whether you're glassing a Sendero in Zapata County, or bearing down on a 160 Class buck in the Canadian River Bottom, Nikon makes premium "tools" for Texas hunters.



Larry Weidman—
Professional Wildlife Biologist,
TV Host and award-winning author



www.nikonhunting.com



ProStaff 550

- Slim, Designed for One-Hand Operation
- Displays in 1/2-yard/meter increments out to 99.5 yards
- Waterproof/Fogproof Construction (except battery chamber)
- Bright, Multicoated Optics
- CR2 Lithium Battery Included
- Quickly and Accurately Ranges to 550 Yards



RifleHunter 550

- ID (Incline/Decline) Technology
- Waterproof/Fogproof Construction (except battery chamber)
- Quickly and Accurately Ranges to 550 Yards
- Displays in .2-yard/meter increments in ID Technology Mode, .5-yard/meter increments in standard mode - out to 99.5 yards; 1-yard/meter increments beyond 100 yards in either mode
- Bright, Multicoated Optics
- Slim, Designed For One-Hand Operation
- CR2 Lithium Battery Included

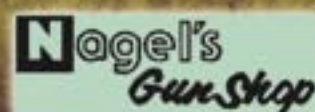


Archer's Choice

- ID (Incline/Decline) Technology
- Waterproof/Fogproof Construction (except battery chamber)
- CR2 Lithium Battery included
- Provides fast and accurate ranging over flat ground, from treestands or in steep terrain
- Displays in .2-yard/meter increments in ID Technology Mode, .5-yard/meter increments in standard mode
- Includes a Silent Technology Neoprene Case in Realtree APG camo with single motion lanyard
- Slim, Designed For One-Hand Operation

Visit this Premier Texas Nikon Dealer

Nagel's Gun Shop



6201 San Pedro Ave., San Antonio, TX 78216
210-342-9893 www.nagelsguns.net